

KSuse
PhotoWall

v 1.14.0

Content

- System requirements 4
- Description of the program interface 5
- Main window (photo wall) 5
- Main settings window 8
 - Paths 8
 - Email settings 10
 - Settings of embedded webpage 11
 - Main settings..... 12
 - Screens..... 13
 - Add interface language..... 16
- Generator 17
 - Main settings of preset 21
 - Competition 22
 - Settings of filling 23
 - Mask of priority 24
 - Mask of printing 24
 - Settings of second screen 25
 - Settings of ads on the second screen 29
 - Settings of animation on the second screen 30
 - Background Removal Settings 35
 - Settings for printing indexes on the exported grid 36
 - Settings for printing indexes on cell printouts..... 36
 - Settings of additional hot folders 37
 - Web version settings 38
 - Email settings 39
 - Lottery settings 40
 - Streaming settings..... 41
 - Settings of recording of animation..... 42
 - VK settings..... 43
- Operating procedure..... 44
- Print settings window 46
- Pre moderation 49

Window "SEND"51

 Email Settings Window51

 Windows "Templates"52

 Window "Additional Settings"53

 Database window54

Window "Browser "55

Program activation.....56

Used libraries.....57

Use only English letters, numbers, point, hyphens, underscores in the names of paths, folders, files!

In case you have a license, the program's work is not limited, but a watermark is added to the photos.

System requirements

Compatibility: Windows 11 24H2.

Recommended computer: Intel i5 (8th Gen and above), i7 (4 or more cores), SSD, at least 8GB of RAM.

Required software:

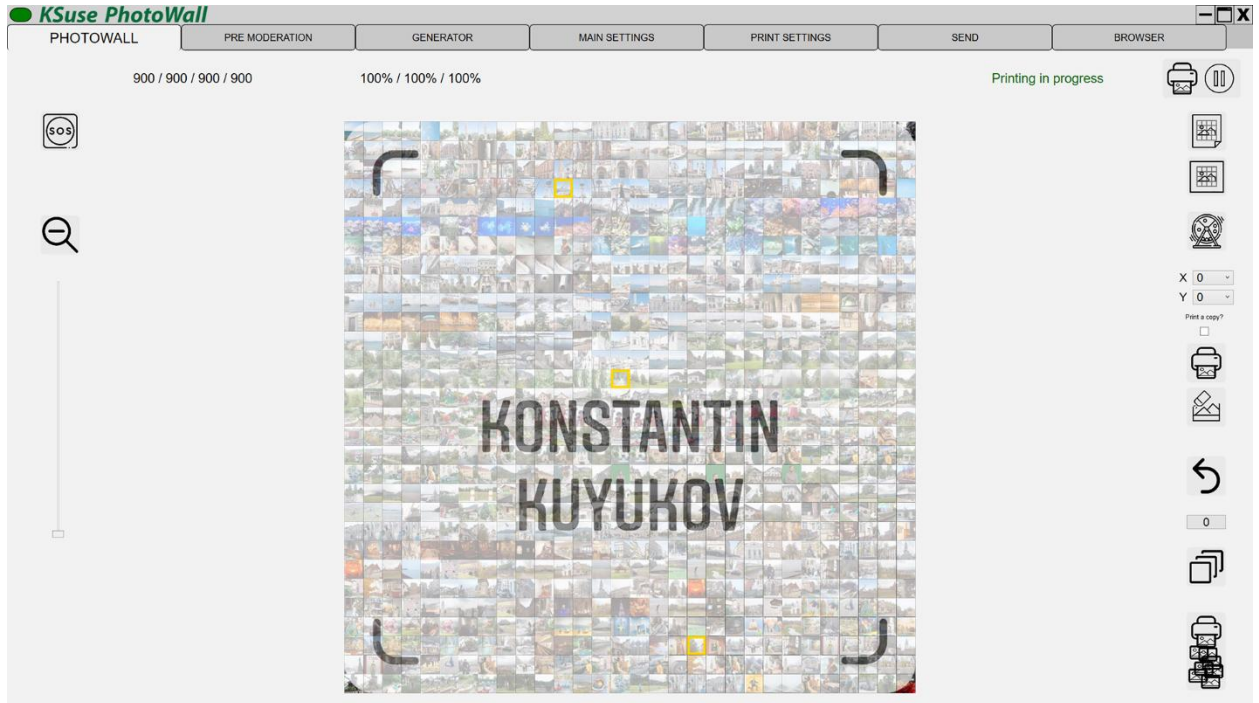
1. .NET 8.0 Desktop Runtime - Windows x64
<https://dotnet.microsoft.com/en-us/download/dotnet/thank-you/runtime-desktop-8.0.21-windows-x64-installer>
2. Microsoft Visual C ++ 2019 redistributable component (both x86 and x64 versions).
https://aka.ms/vs/17/release/vc_redist.x86.exe
https://aka.ms/vs/17/release/vc_redist.x64.exe

Recommended software:

1. Codecs. K-Lite Codec Pack Mega recommended.
https://codecguide.com/download_kl.htm
2. Win7DSFilterTweaker.
https://codecguide.com/windows7_preferred_filter_tweaker.htm

Description of the program interface

Main window (photo wall)



This window displays the current status of the photo wall.


Photos that have been downloaded and processed are displayed in gray.

Photos that were sent to print are displayed in full-color version with superimposed graphics.

If printing or the use of black and white cells is disabled, then the photos are immediately displayed in full color.

When you click on a photo with the left mouse button while holding down the Shift key, it is sent again to print.

When you click on a photo with the right mouse button while pressing the Shift key, it is deleted.

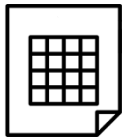
When you right-click on the photo while holding down the Ctrl key, the Zoom animation to this cell starts. The reverse animation does not play automatically; you must click the button .

You can also move a photo with the mouse to another cell. It is strongly not recommended to use photo transfer when printing adjacent cells is enabled, this will disrupt the process of filling the wall.

Indicators:

- Green - Waiting. The wall is either not running or is already fully printed.
- White - The wall is being filled.

The readiness indicator consists of 4 sections: processed / distributed / added to the queue / total necessary.



- export the finished wall to a file for printing (full resolution up to 23K)

The file for printing can be exported only if the cells were rendered in high resolution (see main settings).



- export previews of the finished wall (monitor resolution)



- reprint cell (with index selected above)

If the checkbox is checked and the print settings indicate that it is necessary to print copies to guests, then a cell and copies to guests will be printed.



- cell replacement (with index selected above)



- fill the wall with duplicates

If the quantity is not specified or equal to 0, then full filling is performed, otherwise the specified number of takes is created.

If there is a mask and the "fill only mask" option is enabled, filling is performed only within the mask. Pressing the Ctrl key fills the entire wall, including cells outside the mask.

If you press this button while holding down the Shift key, then the filling is performed not with copies of photos, but overlaid graphics with turned off transparency of the first layer. The options "Fill only the mask" or "Fill only outside the mask" work in this case in the opposite direction. Pressing the Shift + Ctrl keys fills the entire wall, including cells outside the mask.



- click - print all photos prepared for printing (see delayed printing). Shift+click - reprint the entire wall.



- canceling the number of last cells specified in the field below.

Attention! This procedure is irreversible.



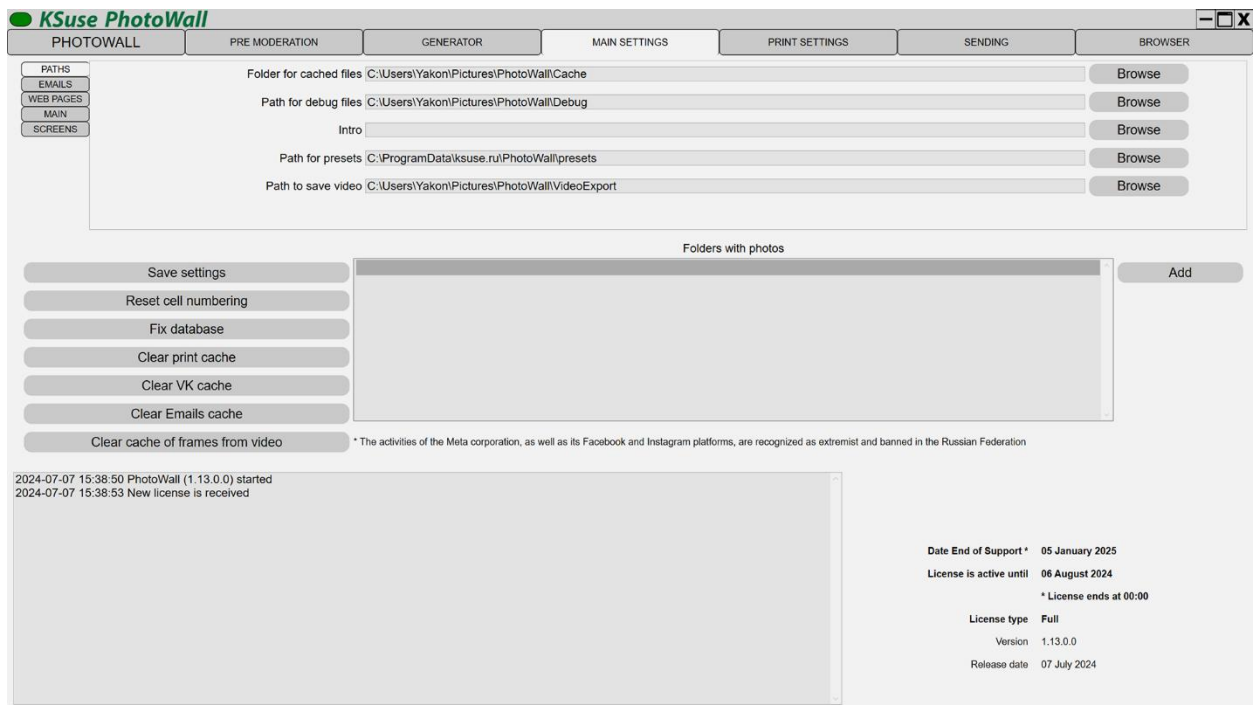
- after pressing this button, the lottery starts. A frame with the color specified in the preset moves randomly along the cells of the photo wall. Pressing again stops the lottery. The Zoom effect is launched on the current cell and its index is written to the list of winning numbers in the preset.



- shows/hides the emergency splash screen on the digital wall.

Main settings window

Paths

**Attention! Settings cannot be saved if you currently have a wall in the “Start” status!**

After changing the parameters, you must save the settings by clicking on the "Save Settings" button!

In this window, you can select folders for save cached data (downloaded photos, previews for photo wall, printed photos) and for debug files.

At the bottom of the window, you can see the log of the program, the end date of support, the end date of the active license, the type of your license and the release date of this release.

The release, released after the end of support, works in demo mode.

The license is automatically renewed for 7 days (by default) when the program starts when there is an Internet connection. If the license has not been renewed, then after the specified date the program runs in demo mode.

The "Fix database" button cleans the database from duplicates.

The button "Clear print cache" deletes cells.

The “Clear VK cache” button deletes all images downloaded from VK.

The button "Clear Emails cache" deletes all files downloaded from the mailbox. There is no automatic cleaning of the folder with files downloaded from mail. When moving to a new wall, it is recommended that you clear the message cache to avoid adding old images to the new wall.

The "Add" button is used to add folders to the folders list. To delete a folder from the list, select it in the list and press the Delete key on the keyboard, or click on the X in the corresponding row.

If the filename is set_X_Y.jpg, then the photo is placed in the specified cell, otherwise the index is randomly selected in accordance with the fill settings.

After changing the list of monitored folders, it is recommended to restart the program.

Photos added to the monitored folders (including subfolders, if the corresponding option is enabled) automatically fall on the photo wall.

The button "Reset cell numbering" allows you to reset the ordinal number of cells, sets the numbering starting from 1. Attention! This procedure is performed only after removing all walls from the lower list.

Email settings

KSuse PhotoWall

PHOTOWALL PRE MODERATION GENERATOR MAIN SETTINGS PRINT SETTINGS SENDING BROWSER

PATHS
EMAILS
WEB PKGES
MAIN
SCREENS

Check email 0
Automatically add to the send queue 0
SSL (TLS) 0

Mail server (IMAP)
IMAP port
Login
Password

Save settings
Reset cell numbering
Fix database
Clear print cache
Clear VK cache
Clear Emails cache
Clear cache of frames from video

Folders with photos

2024-07-07 15:38:50 PhotoWall (1.13.0.0) started
2024-07-07 15:38:53 New license is received

Date End of Support * 05 January 2025
License is active until 06 August 2024
* License ends at 00:00
License type Full
Version 1.13.0.0
Release date 07 July 2024

* The activities of the Meta corporation, as well as its Facebook and Instagram platforms, are recognized as extremist and banned in the Russian Federation

You can enter the data of the mailbox from which the photo wall will download letters with photos.

Letters are also affected by the “Date (from)” filter of the current photo wall. Only messages received after the specified date are downloaded.

If the competition mode is enabled, then the number of the team must be indicated in the subject.

Both attachments and photos inserted into the message body are downloaded.

Attention! To read pdf files, you must install Ghostscript.

<https://www.ghostscript.com/download/gsdnld.html>

SSL connection on port 465 is not supported!

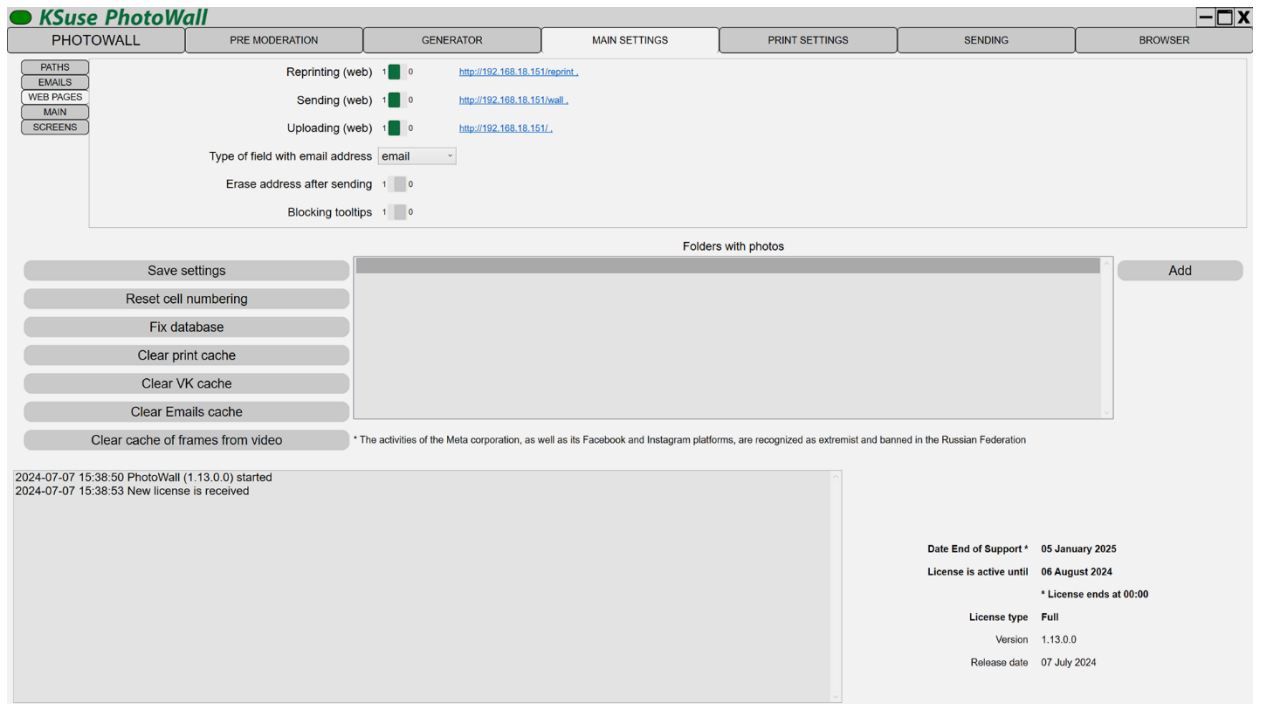
Gmail requires you to use a secure app password instead of your account password. To use Gmail, you need to enable two-factor authentication and create an app password:

<https://myaccount.google.com/signinoptions/two-step-verification>

<https://myaccount.google.com/apppasswords>

You must use the generated password in the PhotoWall instead of the account password.

Settings of embedded webpage



The “Reprint (web)” link is used by operators to reprint cells and to order sending animations to mail.

The "Send (web)" link is used by visitors to order sending animations to mail.

The link “Download (web)” is used to send photos to the photo wall.

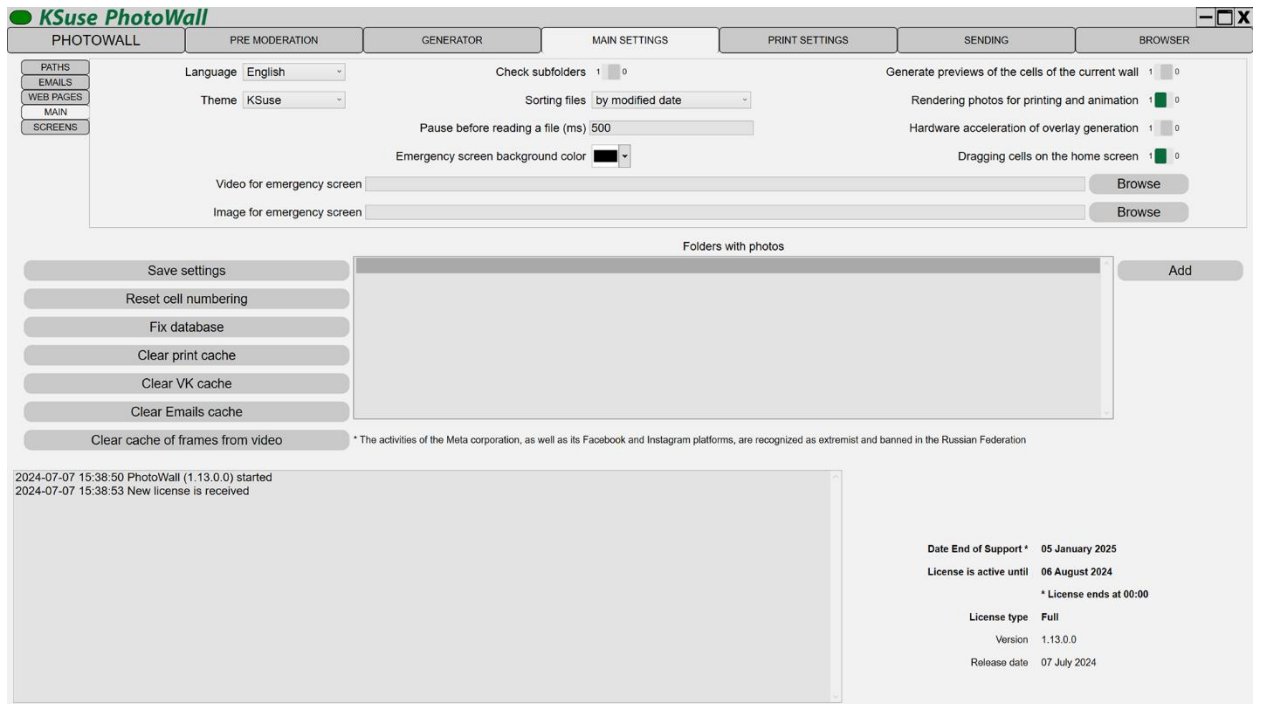
For the field types “email” and “text”, a different virtual keyboard is displayed. Validation for compliance with the format is used for the field with the type “email”, but there is no autocomplete on iOS devices.

“Erase the address after sending” - automatic cleaning of the field with the address immediately after sending.

“Blocking tooltips” - disable autocomplete.

For the web pages to work correctly, you must allow access via the TCP protocol for port 80 in the firewall, or disable the firewall. It is also necessary to turn off any other programs that may use port 80 before starting Ksuse PhotoWall.

Main settings



In this window, you can select the interface language, color theme.

You can enable the search for photos in subfolders in the directories selected for the search.

You can pause between detecting photos and adding them to the processing queue, which will prevent the addition of temporary files.

The option "Dragging cells on the home screen" allows you to enable the ability to change the location of the photo.

When the option "Generate preview of cells of the current wall" is enabled, a preview of the cells of the current wall with the file names X_Y.png is created in the Cell2 folder

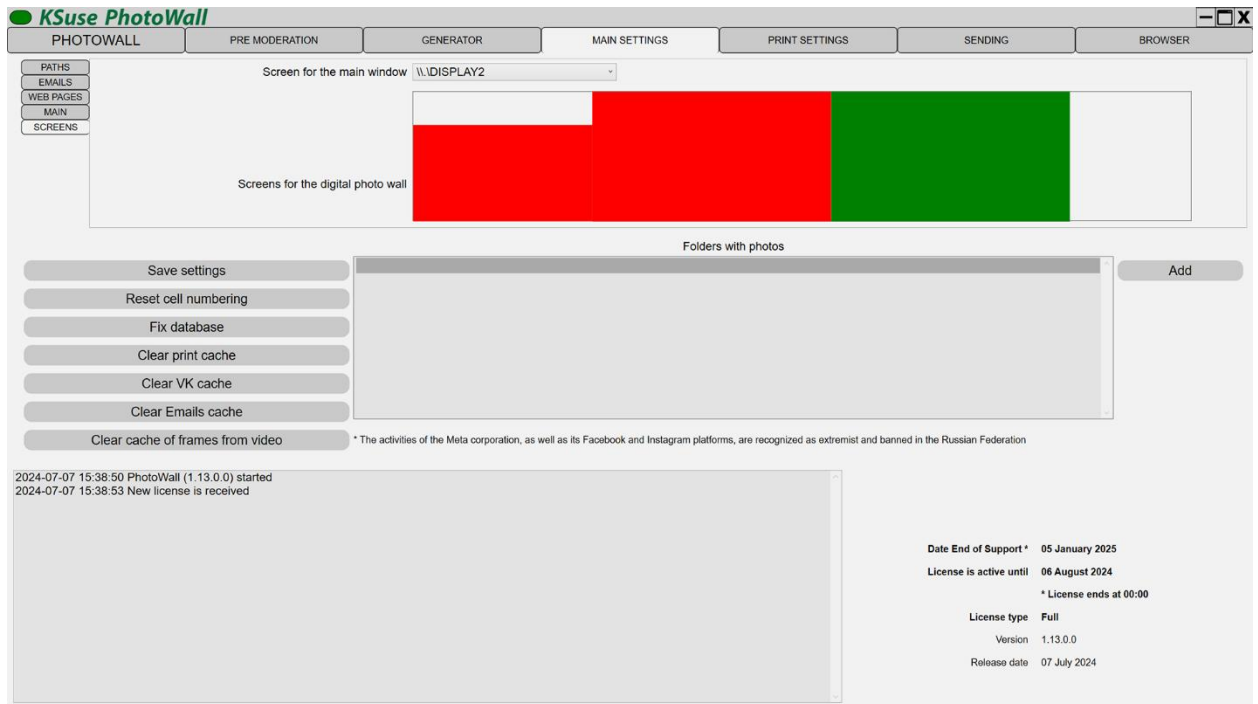
Hardware accelerated overlay generation is not compatible with docking monitors.

If the program closes when saving a preset, then you need to disable hardware acceleration in the settings on this page.

If you need high-resolution processed photos, then you need to enable the "Render photos for printing" option. When the option is disabled, even in Demo mode, the preview is created without watermarks. The option turns on automatically when the digital wall is active.

In this window, you can select the background color of the emergency splash screen, the image and video that will be played on it. The image and video fit into the screen size.

Screens



Using the “Screen for the main window” option, you can redirect application window to other displays.

Displays for displaying the digital wall are selected in the central block by clicking on the display rectangle. The selected displays are highlighted in green.

The digital wall works correctly only when the scale is 100% set in the properties of all monitors.

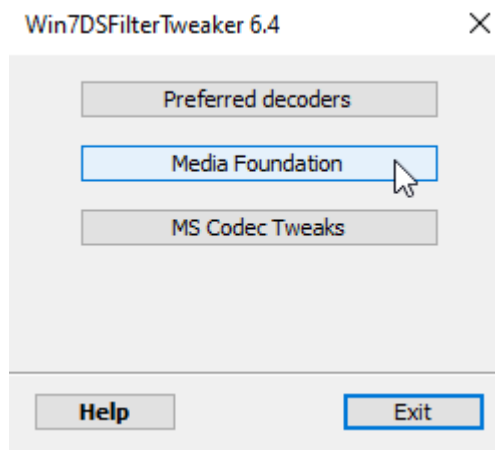
When the option to show the wall on the second monitor is turned on, the photo wall is also displayed on it.



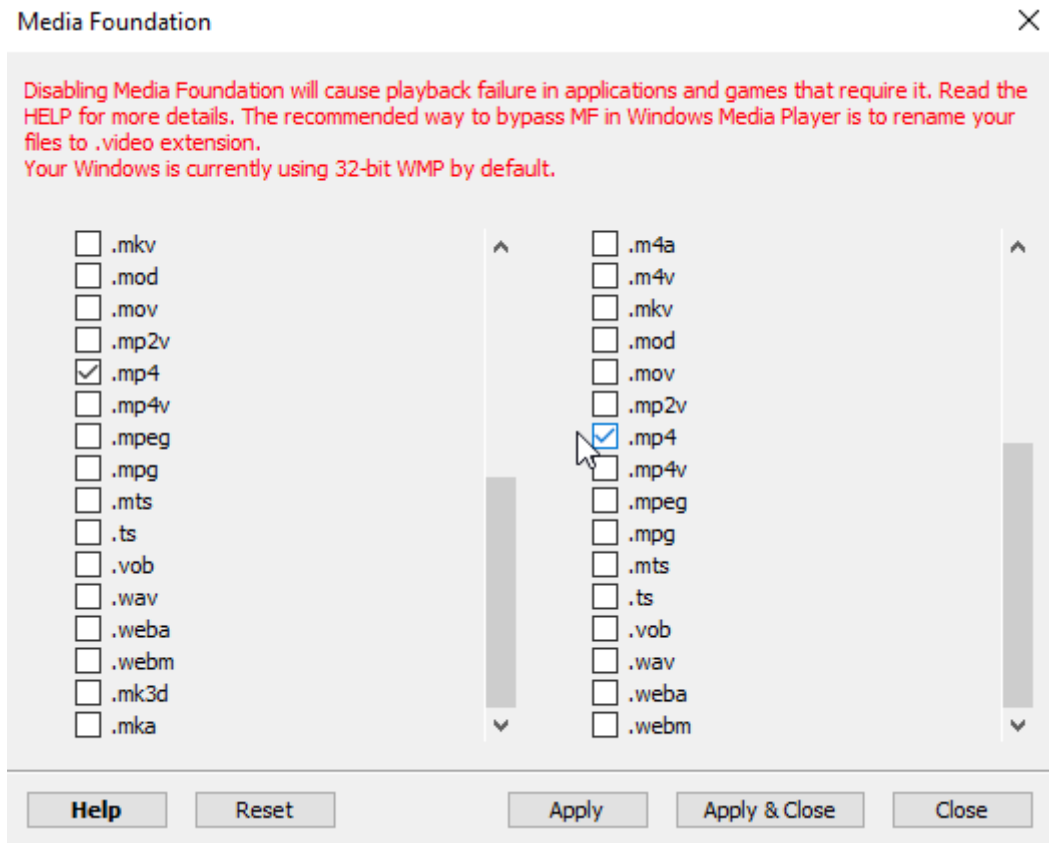
If the content of the digital wall uses mp4 files and the Zoom animation is enabled, then the Media Foundation must be disabled for this file type.

This can be done using the Win7DSFilterTweaker program:

https://codeguide.com/windows7_preferred_filter_tweaker.htm



Check the checkboxes opposite .mp4

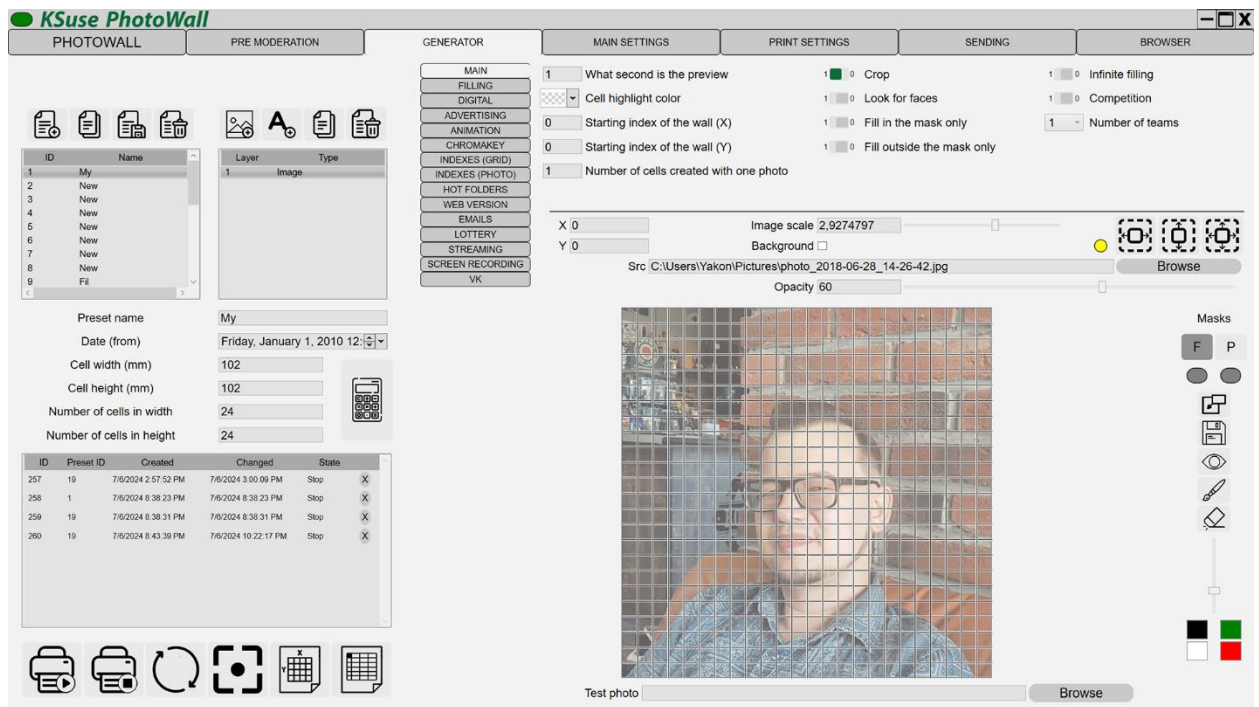


For correct video playback in other programs, you must uncheck these boxes.

Add interface language

1. Create a copy of C:\Program Files\ksuse.ru\PhotoWall\lang\en.xaml
2. Rename the copy to the two-letter designation corresponding to the new language, for example, ru.xaml
3. Add a new language to the new line in langs.txt in the format designation=name, for example, ru=Russian


Generator




In this window, you can create and configure wall presets, as well as manage current walls.

Attention! Settings cannot be saved if you currently have a wall in the "Start" status!

After changing the parameters, you must save the settings by clicking on the "Save preset" button!

 - create a new preset

 - duplicate preset

 - save preset



- delete preset



- add image



- add text



- duplicate layer



- remove layer



- fit to grid width



- fit to grid height



- start of filling the photo wall



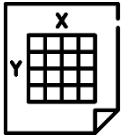
- stop filling the photo wall



- pause printing



- recording a second window in mp4



- export png for printing the basics

“Date (from)” - Photos created and changed earlier than the specified time are not processed.

By choosing a test image, you can check how the overlaid graphics will look on your photos and configure chromakey removal.

In this window, you can set the branding of printouts for the visitor, by overlaying graphic and text elements.

Moving the current layer is done with the left mouse button, or by changing the values of the "X", "Y" fields.

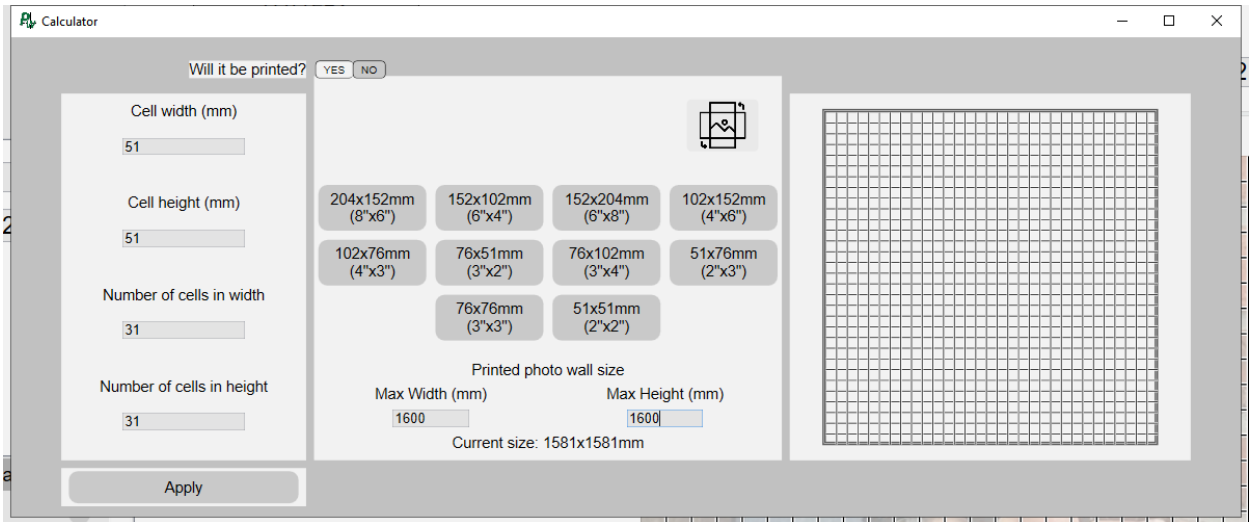
You can scale the current layer using the mouse wheel.

If you have a layer with an image selected, the image can be automatically scaled using the "Fill by width", "Fill by height" or "Fill completely" buttons. The buttons change the image scale without changing the aspect ratio of the image.

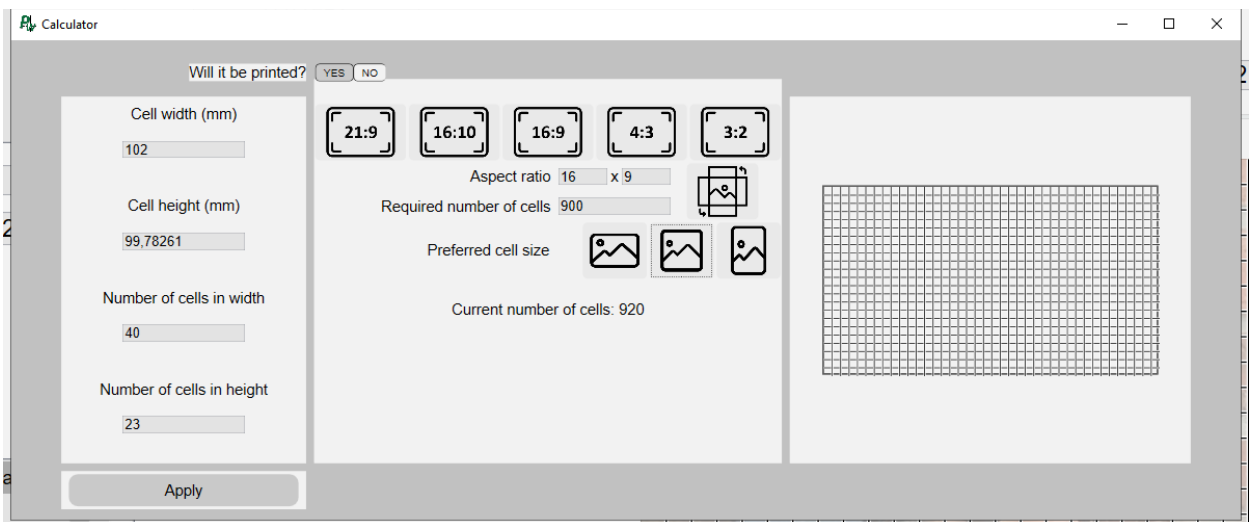
If the image covers the entire wall, the indicator glows green, if not, then red.



- cell size and number calculator



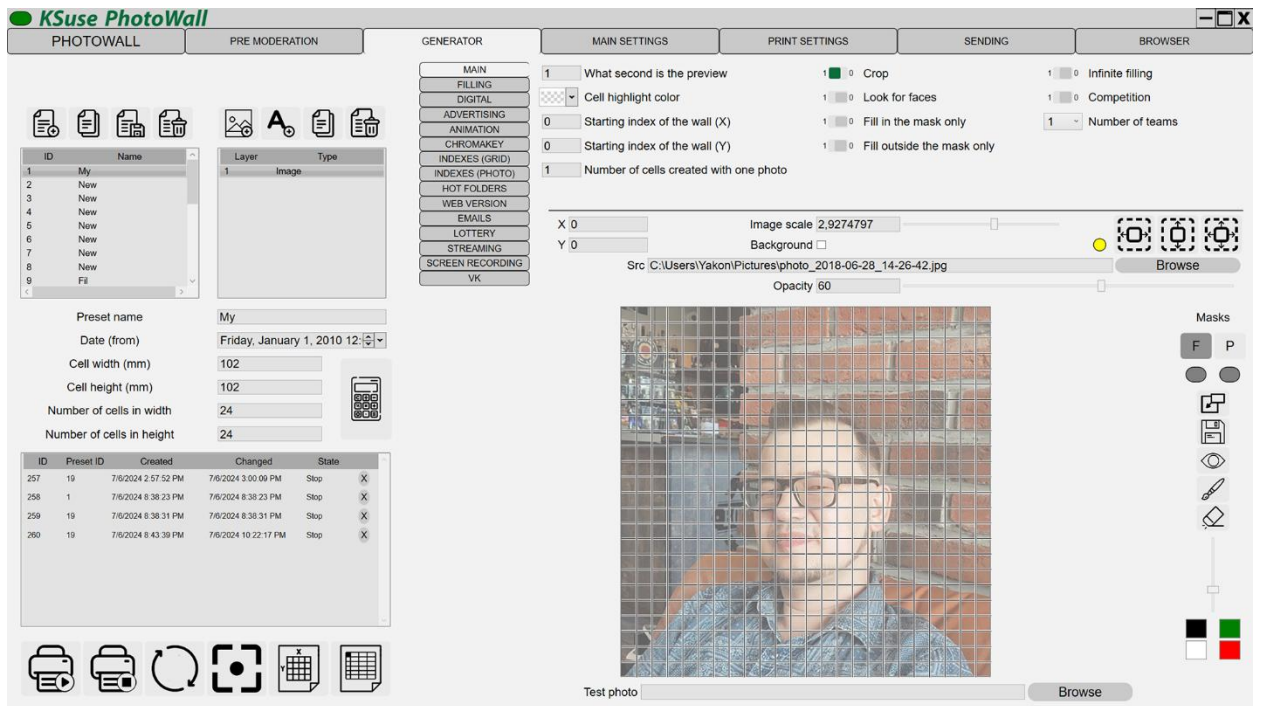
In this mode, you must select the paper size and enter the cell dimensions. The calculator will calculate the number of cells that will fit in the specified dimensions and display a preview of the grid.



In this mode, the number of cells and the cell size is adjusted so that the entire screen is filled with a photo wall.

First you need to enter the target number of cells on the photo wall. Next, you need to select the aspect ratio of your screen and the preferred shape of the cells (horizontal 3:2, square or vertical 3:2) or enter in the appropriate fields.

Main settings of preset



- “What second is the preview” - If an mp4 file is found in the hot folder, the wall takes a frame from the specified second of the video as a photo.
- "Infinite filling":
off (default) - loading of new images stops after filling the entire wall;
on - after filling the entire wall, loading of new images continues with the replacement of existing cells.
- “Cell highlight color” - The last added cell is highlighted with the frame of the specified color (by default, transparent).
- “Start Wall Index (X)” - The default column numbering starts at 0.
- “Start Wall Index (Y)” - The default line numbering starts at 0.
- “Crop” - When this option is enabled, the photo will be cropped to the aspect ratio of the cell. When the option is disabled, the photo will be fitted. The empty space around the photo is filled with overlay graphics with transparency turned off.
- “Look for faces” - When this option is enabled, faces are searched and photo is cropped with offset to prevent faces from being cut off. Searching for faces creates additional workload. It is recommended to turn it off if you have people in the center of the frame. When the option is turned off, strips of the same width are cut on both sides.

- "Fill only in the mask" - When this option is enabled, only the cells under the mask are filled.
- "Fill only outside the mask" - When this option is enabled, only the cells around the image mask are filled.
- "Number of cells created with one photo" - Creates the specified number of cells with different indexes with one photo.

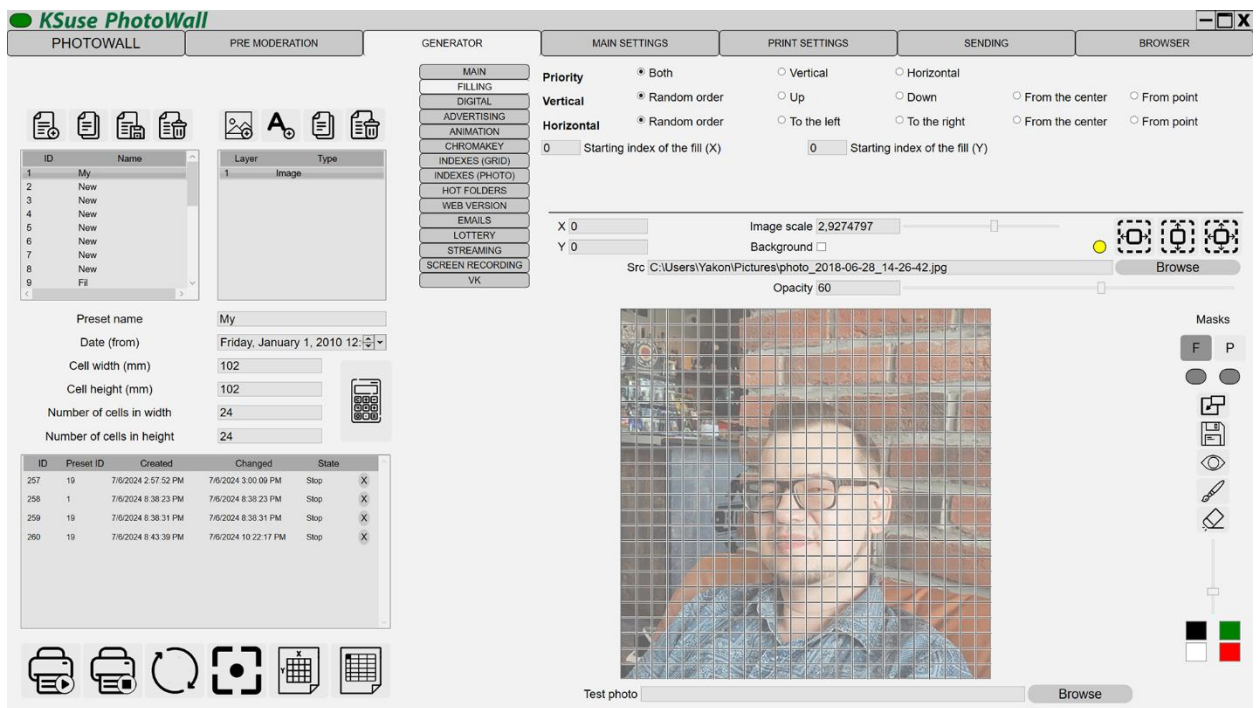
Competition

In this mode, the photo wall is divided into columns, in the amount indicated in the "Number of teams" field.

The first column of the photo wall is filled with photos with the first hashtag and from folders whose names end with __1 (the two underscores and the command number). The second one is filled with photos with the second hashtag and from folders whose names end with __2 and so on.

When the competition mode is off, photos on all the specified hashtags and from all the folders specified in the settings are loaded on the photo wall.

Settings of filling



This settings block allows you to specify the order of filling the wall. You can choose a combination of 3 parameters: Priority of filling, vertical direction and horizontal direction.

Example: <https://www.youtube.com/watch?v=QCC8sx3O4Uc>

Mask of priority

Using a brush, you can draw a mask for the photo wall. Cells located under the mask will be filled first.

Using the slider, you can change the width of the brush.

When the brush mode is on, the left mouse button draws a mask, the right mouse button erases a mask.



- import of mask.

You can import transparent PNG as a mask, opaque pixels become a mask.

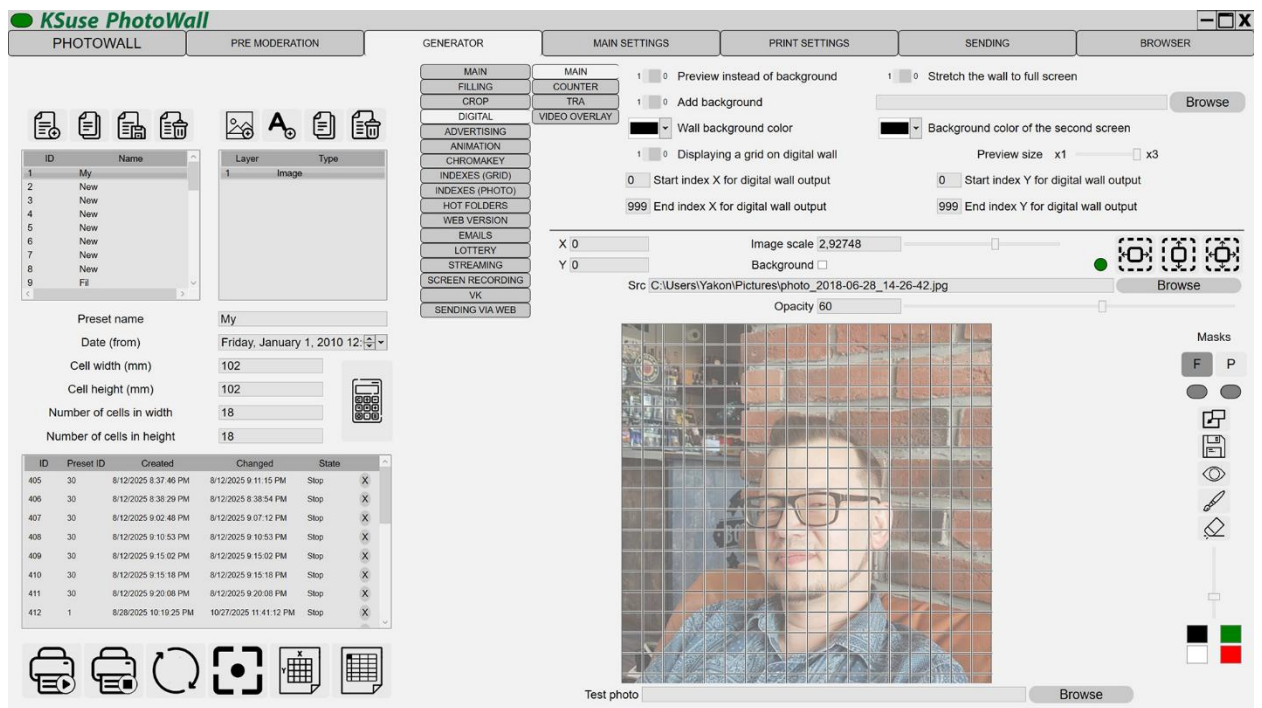
Mask of printing

Using the brush, you can draw a print mask for the photo wall. Only cells located under the mask will be sent to print.

The F and P buttons are used to switch between masks.

Below them are indicators showing whether masks exist in this preset.

Settings of second screen



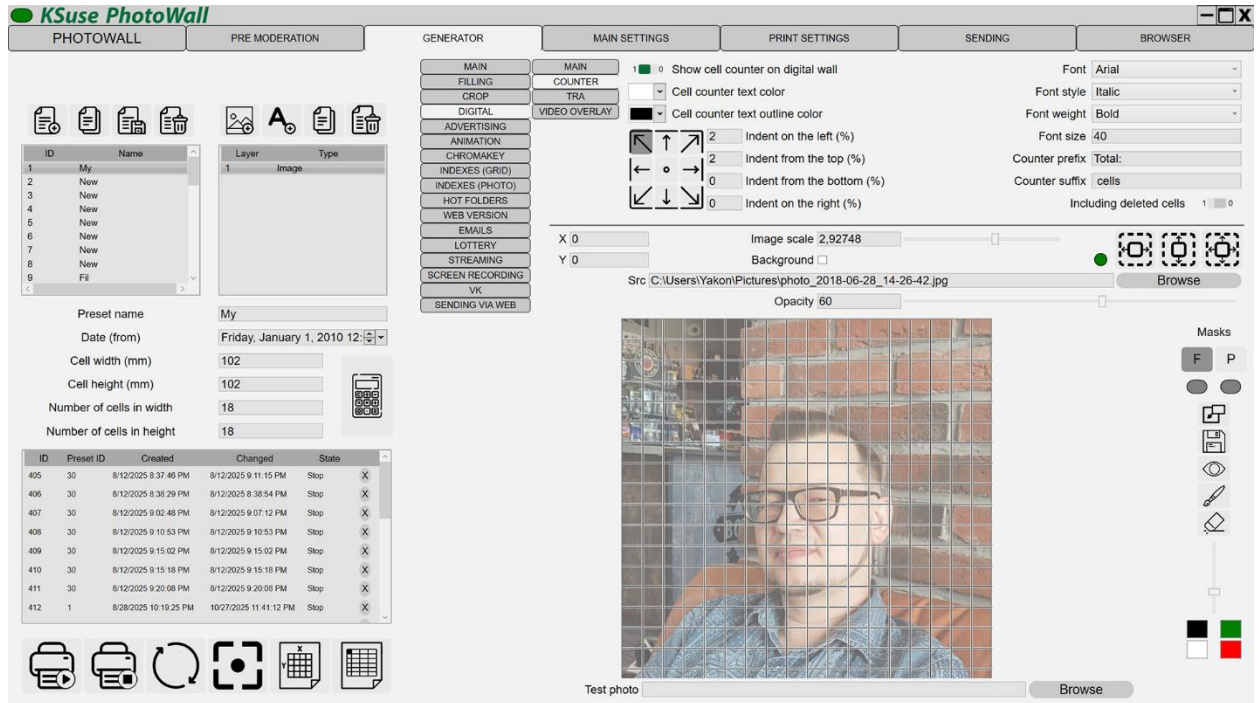
- “Wall background color” - fill color of the second screen.
- “Background color of the second screen” - background color outside the wall.
- “Stretch the wall to full screen”:
 - off (by default) - the wall is centered, keeping the proportions;
 - on - the wall is stretched to full screen (the proportions are not preserved).
- “Preview size” - an additional increase in the resolution of the generated preview to improve the sharpness of photographs on large high-definition screens.
- “Preview instead of background” - In the place of empty cells an image is displayed that will be laid out in a mosaic.
- “Add background” - In the place of empty cells, an image is displayed, the path to which is typed in the text box.

If a transparent background of the screen or photowall is selected, then the contents of the screen located under the photowall window are displayed. In this mode, it is impossible to record video to a file or broadcast to a rtmp server!

It is possible to display only part of the photo wall on the digital photo wall.

To do this, you need to change the starting and ending X,Y indexes.

Only the cells included in the rectangle between the specified indexes will be displayed on the digital photo wall.



It is possible to display an indicator of the number of filled cells on a digital photo wall. This tab allows you to configure the position and appearance of this indicator.



PHOTOWALL PRE MODERATION GENERATOR MAIN SETTINGS PRINT SETTINGS SENDING BROWSER

MAIN COUNTER 0 Start index X for cleared flight area 0 Start index Y for cleared flight area
 CROP TRA 999 End index X for cleared flight area 999 End index Y for cleared flight area
 DIGITAL VIDEO OVERLAY

ADVERTISING ANIMATION CHROMAKEY INDEXES (GRID) INDEXES (PHOTO) HOT FOLDERS WEB VERSION EMAILS LOTTERY STREAMING SCREEN RECORDING VK SENDING VIA WEB

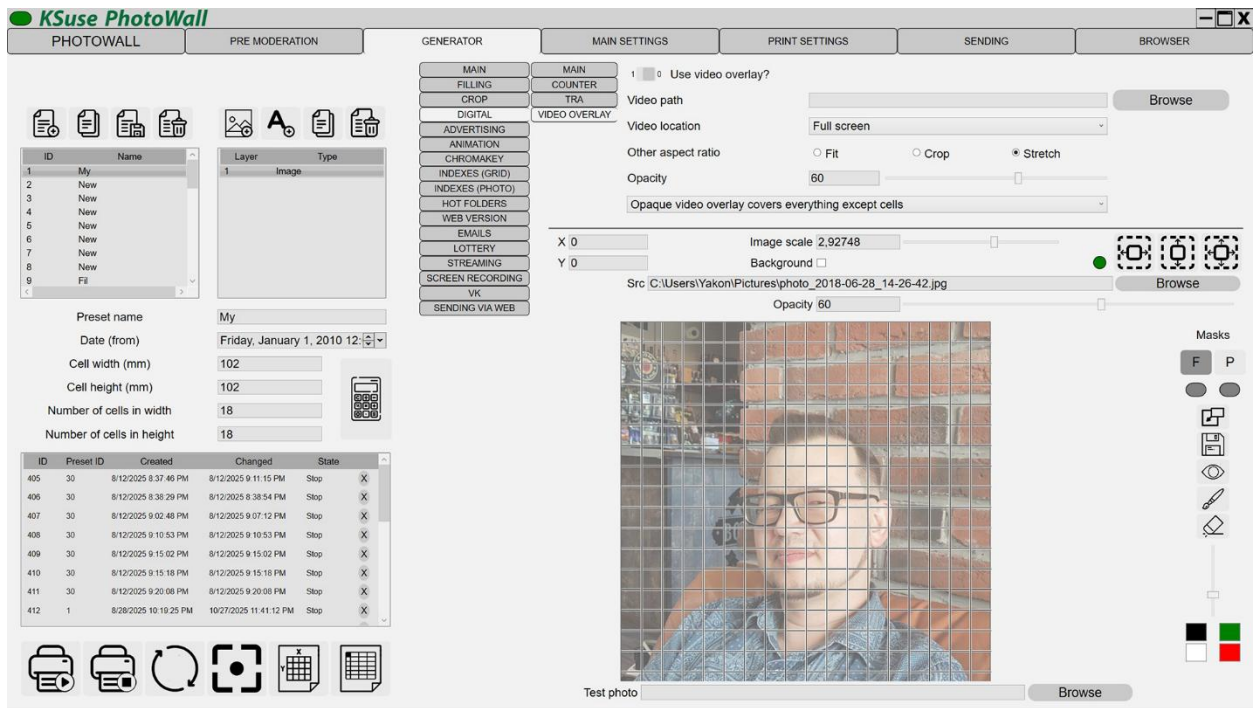
X 0 Image scale 2,92748
 Y 0 Background Src: C:\Users\Yakon\Pictures\photo_2018-06-28_14-26-42.jpg Browse
 Opacity 60

Masks F P

Test photo Browse

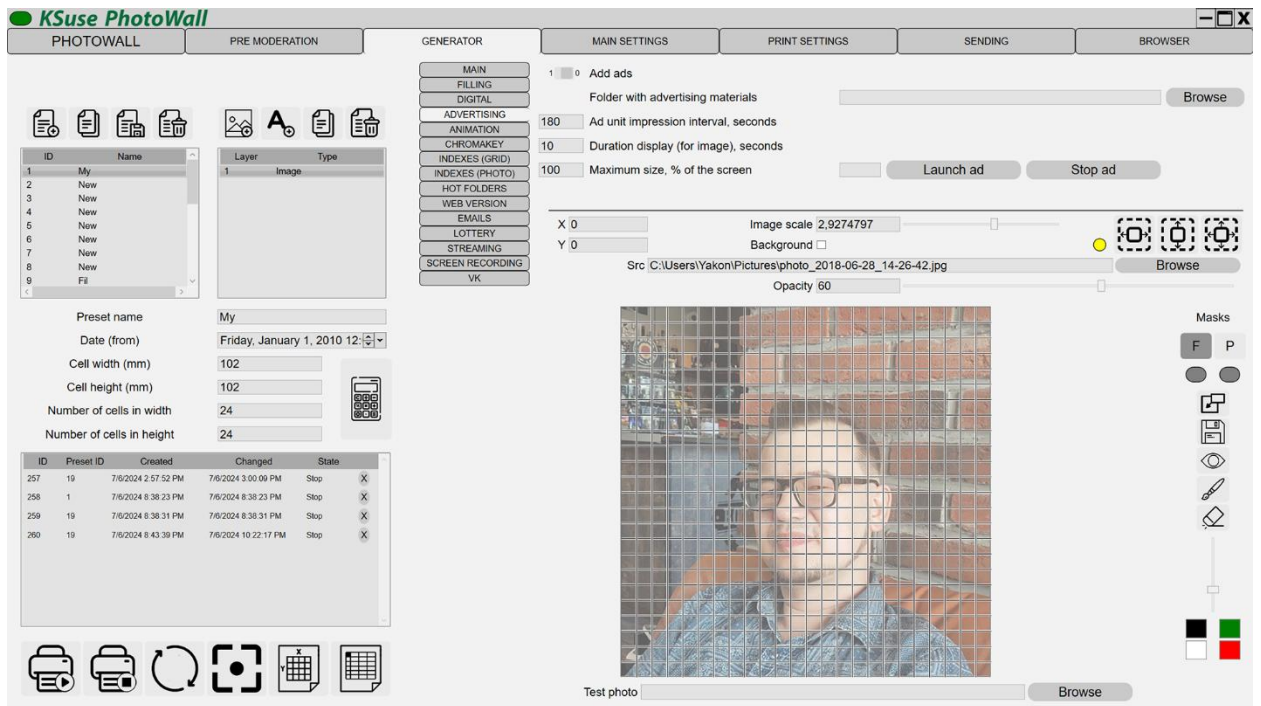
ID	Preset ID	Created	Changed	State
405	30	8/12/2025 8:37:46 PM	8/12/2025 9:11:15 PM	Stop X
406	30	8/12/2025 8:38:29 PM	8/12/2025 8:38:54 PM	Stop X
407	30	8/12/2025 9:02:48 PM	8/12/2025 9:07:12 PM	Stop X
408	30	8/12/2025 9:10:53 PM	8/12/2025 9:10:53 PM	Stop X
409	30	8/12/2025 9:15:02 PM	8/12/2025 9:15:02 PM	Stop X
410	30	8/12/2025 9:15:18 PM	8/12/2025 9:15:18 PM	Stop X
411	30	8/12/2025 9:20:08 PM	8/12/2025 9:20:08 PM	Stop X
412	1	8/28/2025 10:19:25 PM	10/27/2025 11:41:12 PM	Stop X

It is possible to limit the area of the screen in which the cell appearance animation is played. In this tab, you can specify the indexes of cells (from and till) over which animation is allowed.



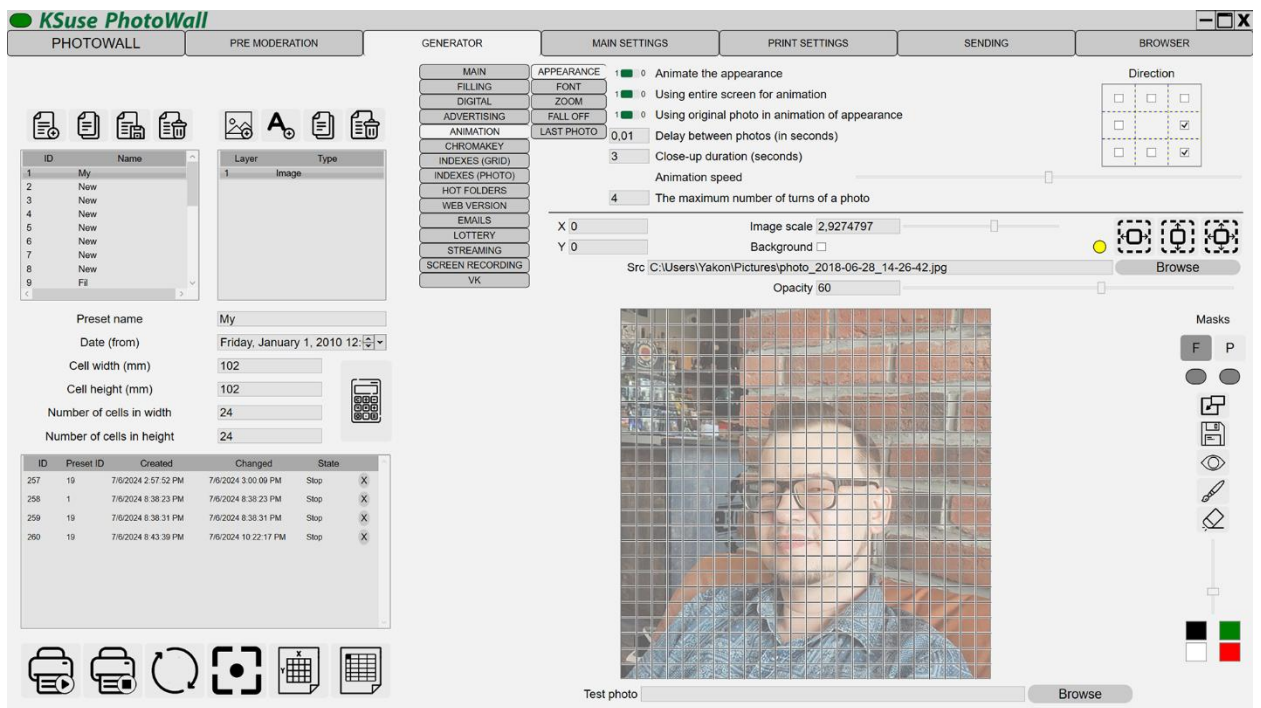
You can display a semi-transparent video overlay on your digital wall. You can enable it and adjust its transparency (including partial transparency) in this window. Please note: Video overlay are not compatible with Zoom animation!

Settings of ads on the second screen



- “Add ads” - Turn on / off the output on the second screen of advertising images (png, jpg) and video (mov, mp4).
- “Folder with advertising materials” - Images and videos are loaded from the specified folder. They display in turn in alphabetical order.
- “Ad unit impression interval, seconds” - Interval in seconds between ad impressions.
- “Display duration (for image), seconds” - Applies to images. The video is hidden after the end of its playback.
- “Maximum size, % of screen” - Ad unit size.

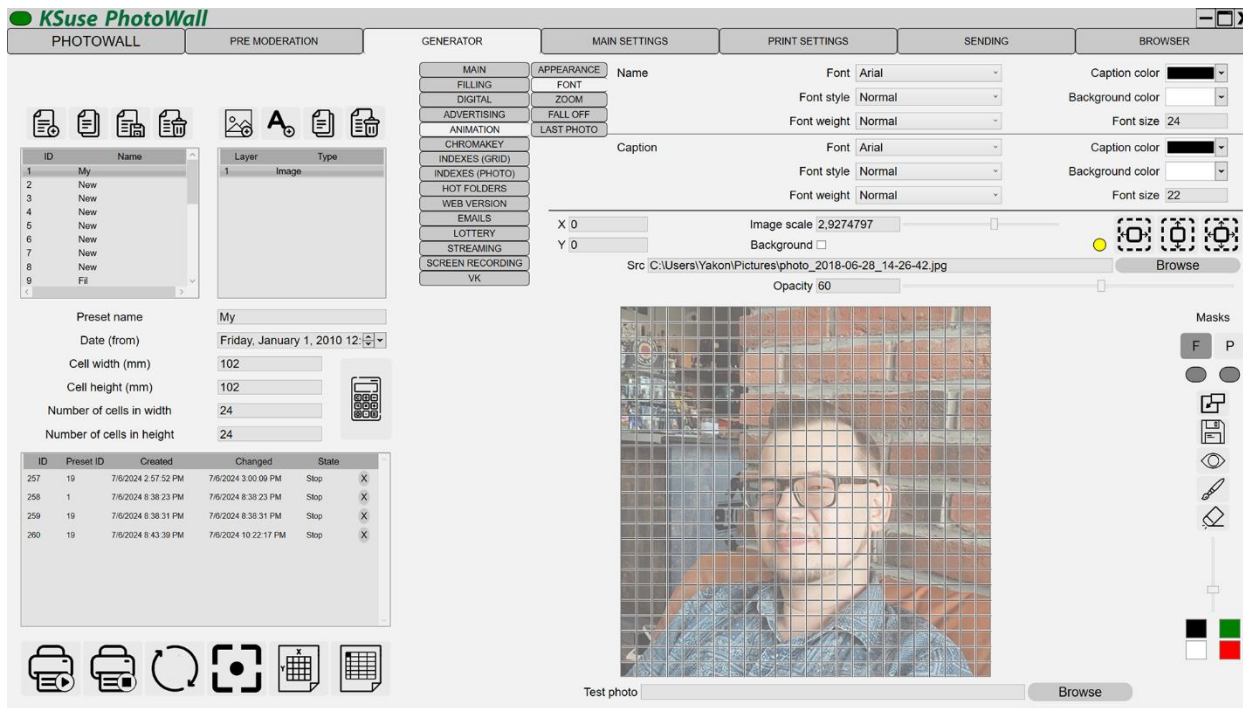
Settings of animation on the second screen



- “Animate the appearance” - The photo flies from behind the screen, is displayed in large size, and then takes its position in the wall.
- “Use the entire screen for animation” - If the wall does not occupy the entire area of the second screen, this parameter indicates whether the area used by the animation is limited by the size of the wall.
- “Use the original photo in the appearance animation” - If enabled, the photos appear in the animation on a digital wall without overlay graphics, and after they have taken their position, they are replaced with cells with overlay graphics. If off, then the entire animation happens with the resulting cells.
- “Delay between photos” - Delay in seconds between the appearance of photos.

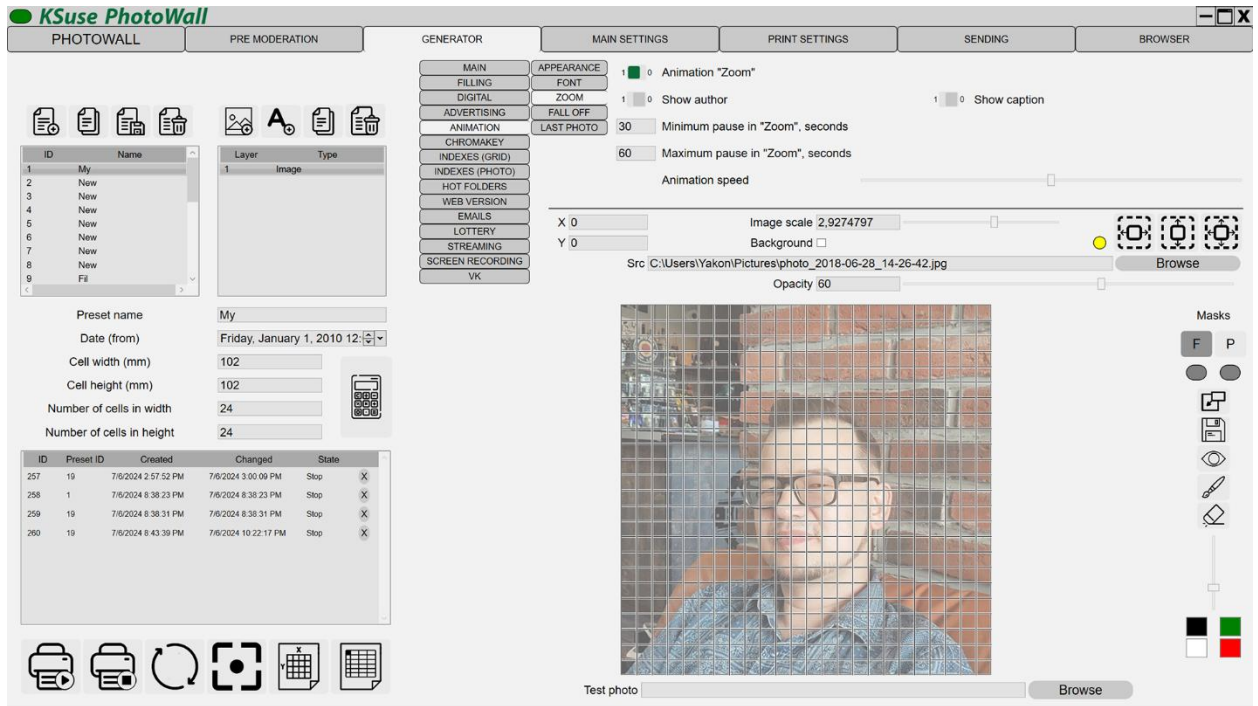
Using the "Animation speed" slider, you can speed up or slow down the animation.

Checkmarks “Direction” mark the sides from which the photos will “fly”. If no one checkmark is not checked, then the photos appear from the center.



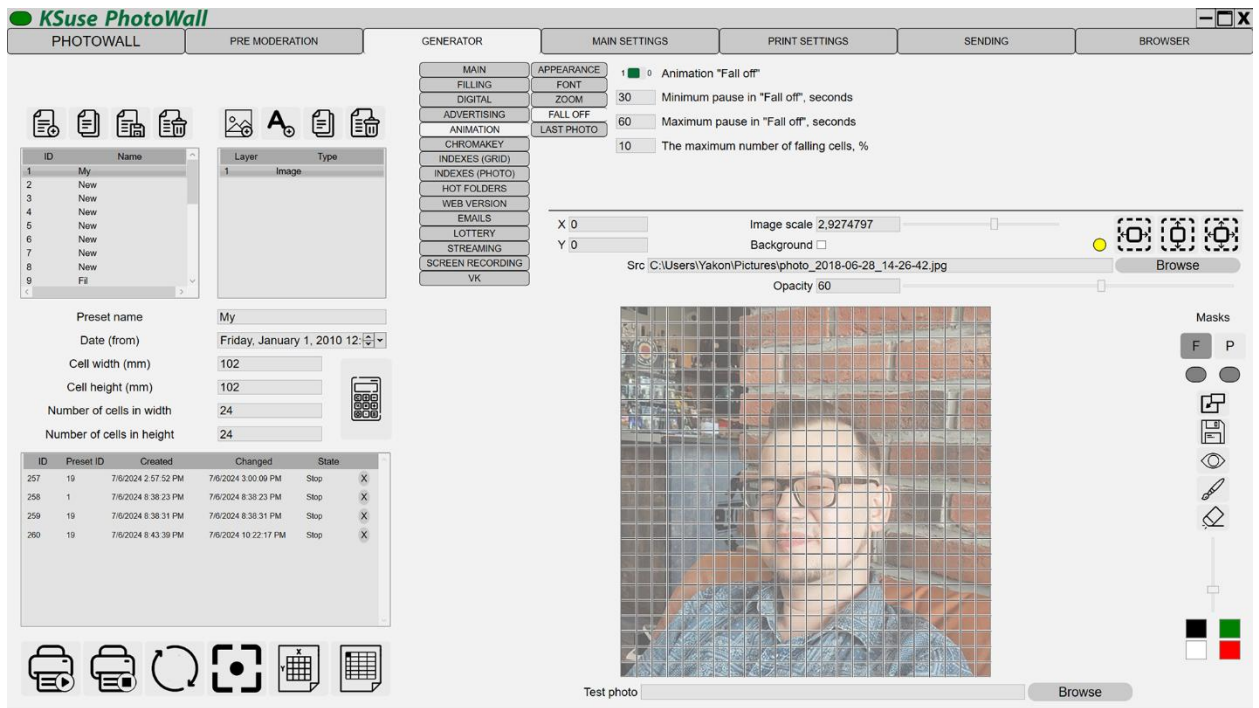
In this window it is possible to customize the appearance of the cell labels.

For the web version, only color adjustment is applied.

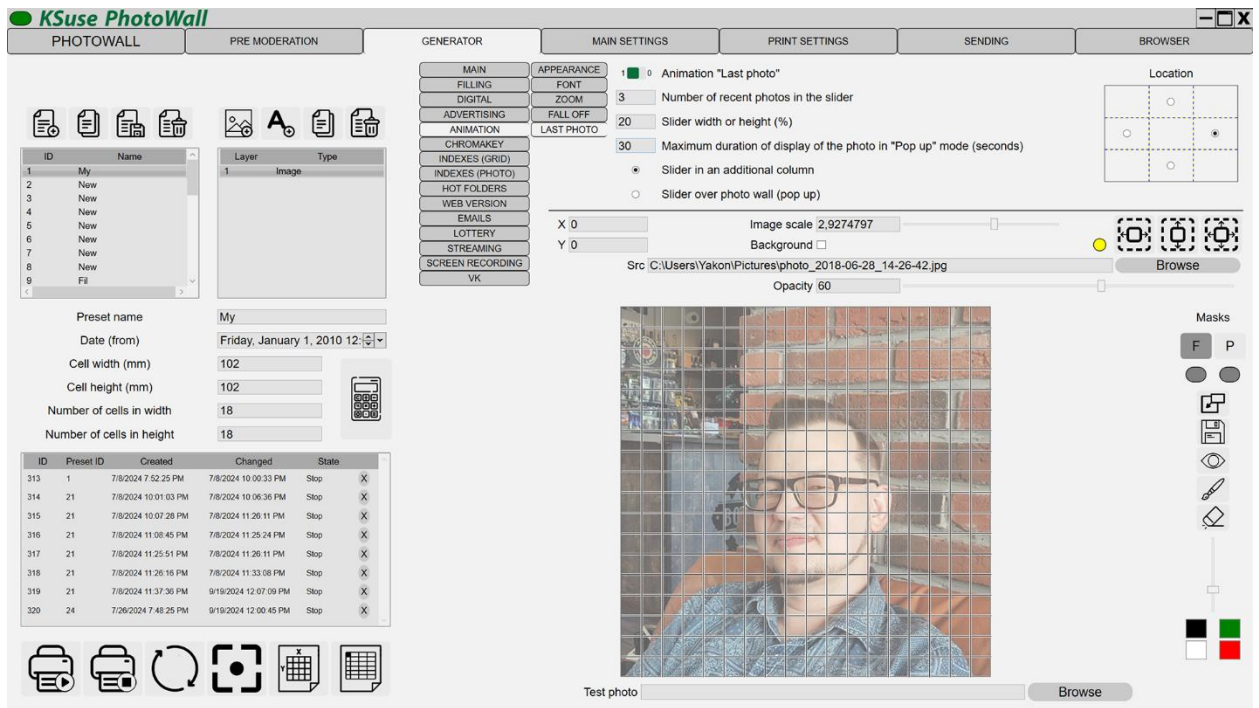


- “Animation "Zoom". During idle, a wall at a random moment brings a randomly selected photo closer, then returns to its original state.
- “Min. pause in the animation "Zoom", seconds” and “Max. pause in the animation "Zoom", seconds” - Defines the interval between starts of the animation.

Using the "Animation speed" slider, you can speed up or slow down the animation.

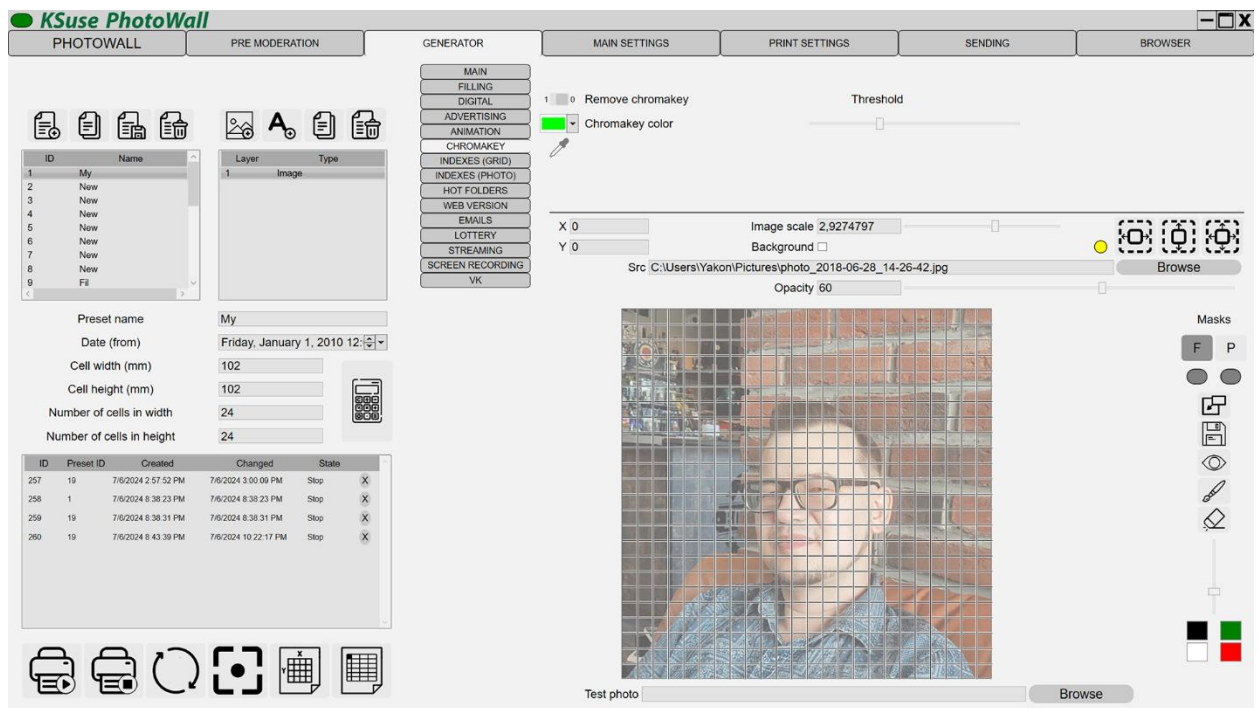


- “Animation "Fall off". During the idle period of the wall, at a random moment, some of the cells fall off the wall, then they return using the animation of appearance.
- “Min. pause in the animation "Fall off", seconds” and “Max. pause in the animation "Fall off", seconds” - Defines the interval between starts of the animation.
- “Maximum number of falling cells, %” - The number of cells is random within the specified percentage.



“Animation “Last Photo” - On the screen with a digital photo wall, an empty area is created next to the photo wall (on the specified side of the screen), in which the specified number of last cells is displayed in an enlarged form.

Background Removal Settings

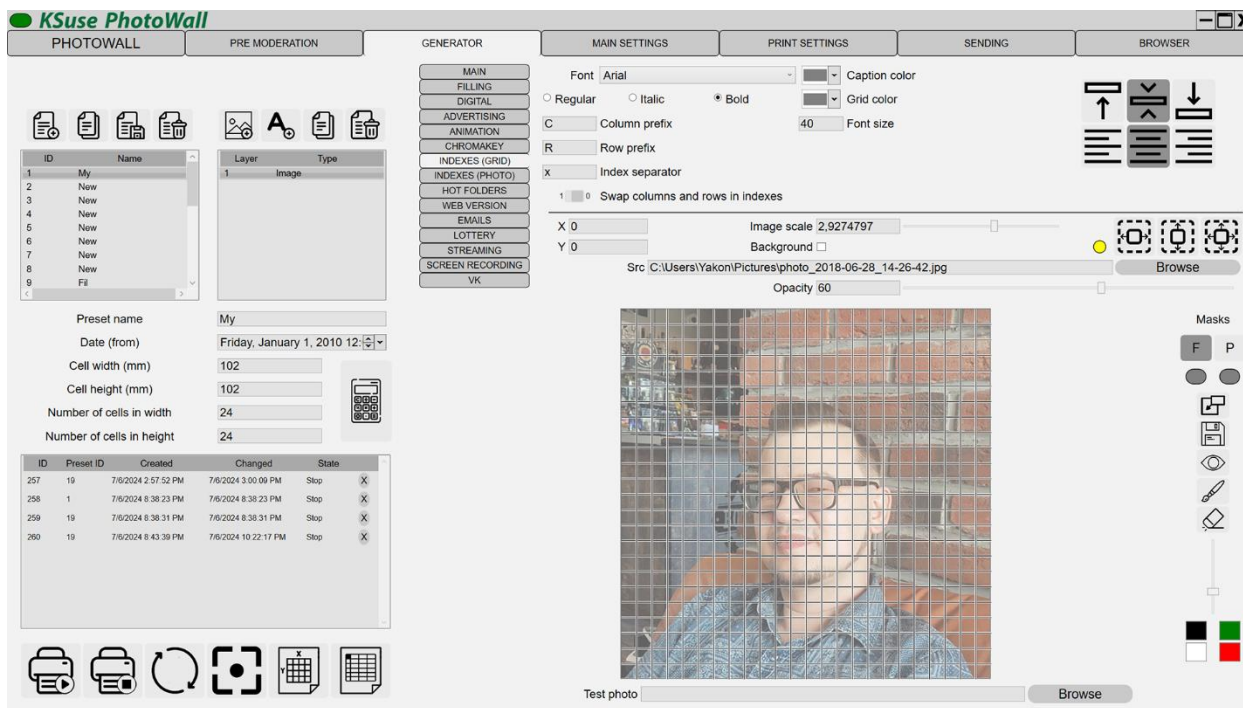


Enable the option “Remove chromakey”, set the color of the chromakey, set the threshold.

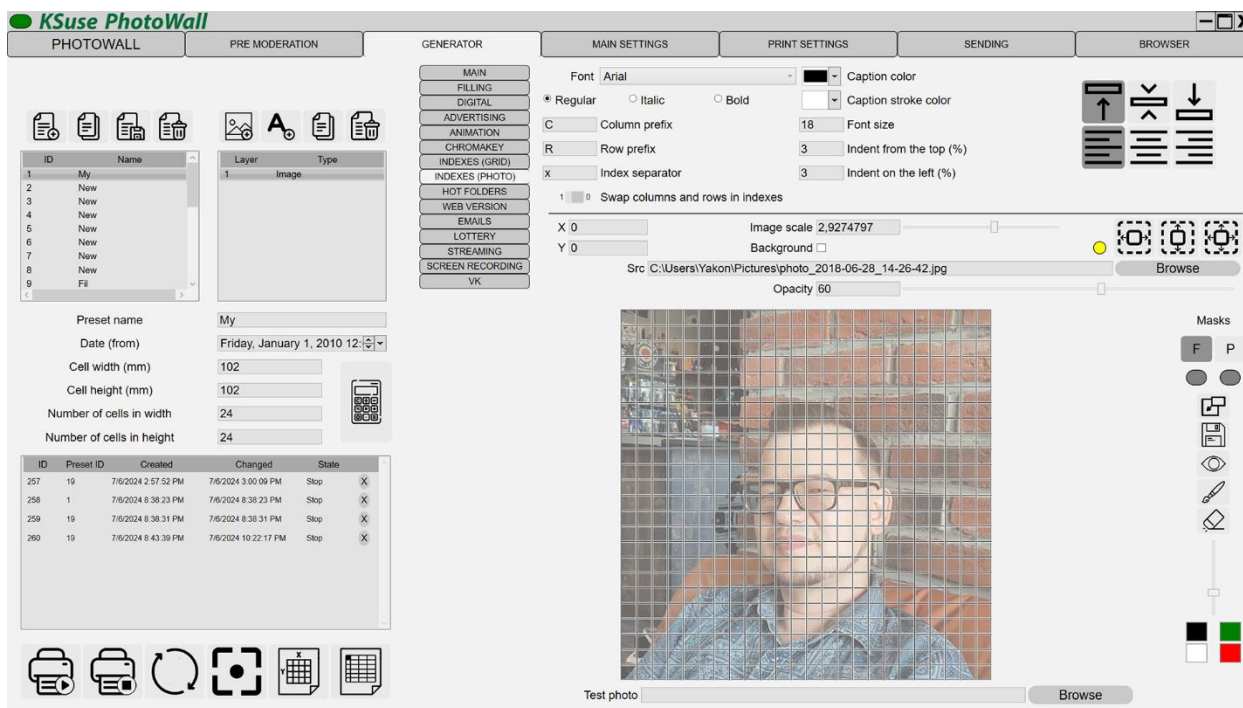
Using the eyedropper, you can take color from the test image.

The deleted background is filled with a background color and then with an overlay with transparency turned off.

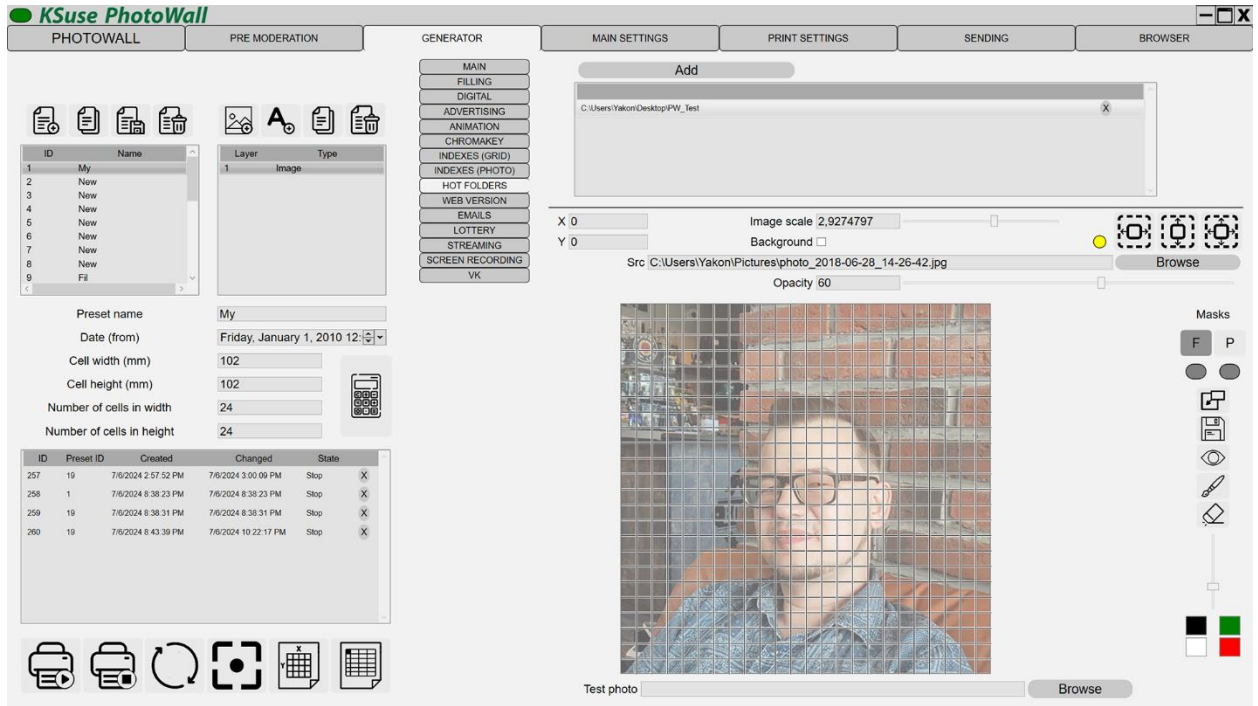
Settings for printing indexes on the exported grid



Settings for printing indexes on cell printouts



Settings of additional hot folders

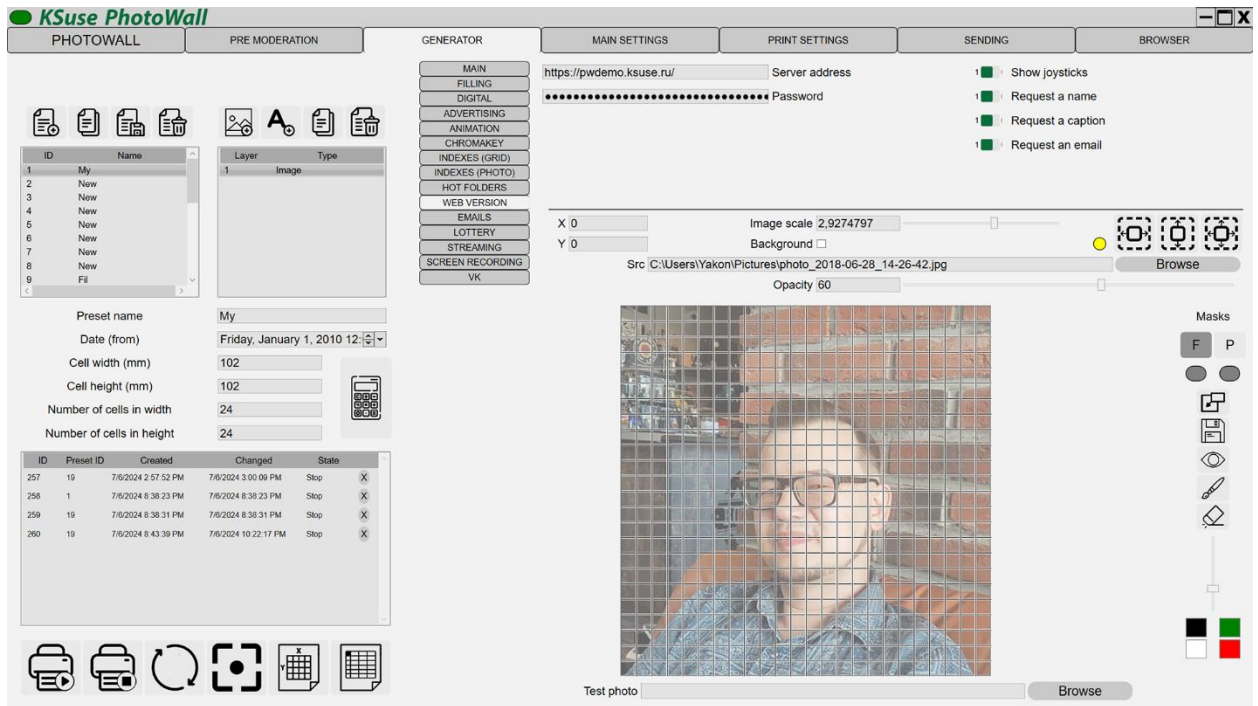


The list of folders in this window functions identically to the same in the main settings.

This setting makes it possible to set hot folders that will be used only in this preset.

The “Add” button is used to add folders to the folders list. To delete a folder from the list, select it in the list and press the Delete key on the keyboard, or click on the X in the corresponding row.

Web version settings



Website address for the web version of the photo wall and password for synchronization.

Synchronization procedure: <https://youtu.be/JCxU0zxAPMM>

The files from the folder "for_site" that you copied to the site must correspond to the version of the program in which the photo wall placed on the site is created.

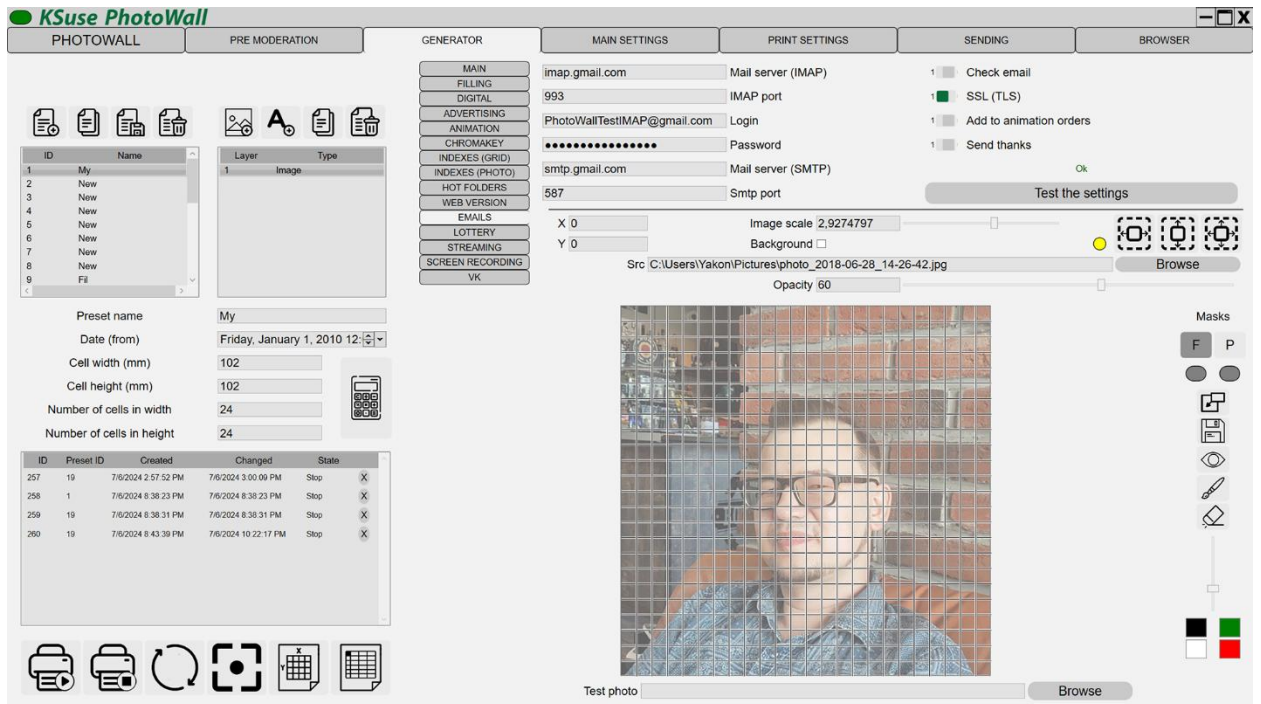
You must set 0777 permissions to folder "Data".

Attention! When synchronizing, the program only checks for the presence of a file on the server, and does not control its content.

Attention! Cleaning is done by deleting the contents of the Data folder.

Sending photos from the site is done using email!

Email settings



The settings are identical to the Emails tab in the main settings.

Enabling mail checking here overrides the general setting. That is, in this tab, you can set individual settings for each preset instead of the general ones.

If the option "Check mail" is enabled, the form on the site sends emails with photos to this mailbox.

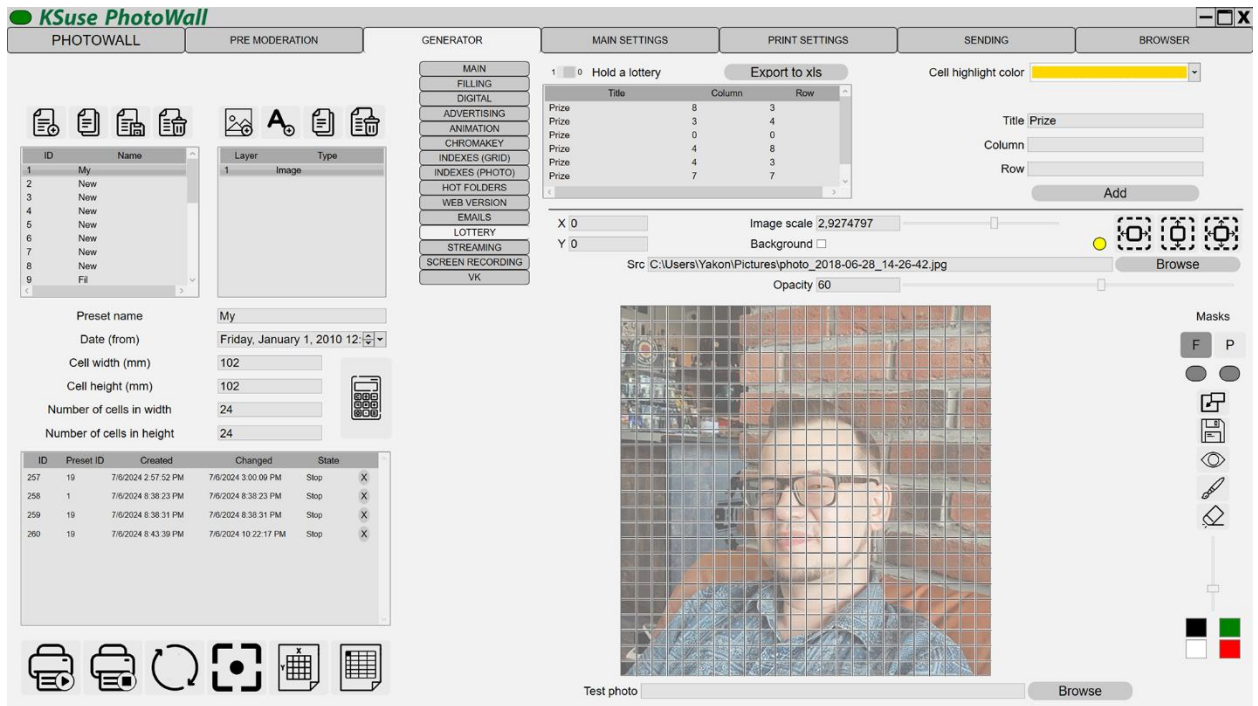
"Add animation to orders" - Adds a sender to the finished animation sending queue.

"Send Thank You" - Automatically send a letter of thanks. The template for sending thanks must be selected before filling the wall.

If the mailbox settings are not filled in or the wall has already been assembled, then the submission form is hidden from the site.

If the mailbox settings are not filled out or the wall is already filled, then the sending form is hidden from the site.

Lottery settings



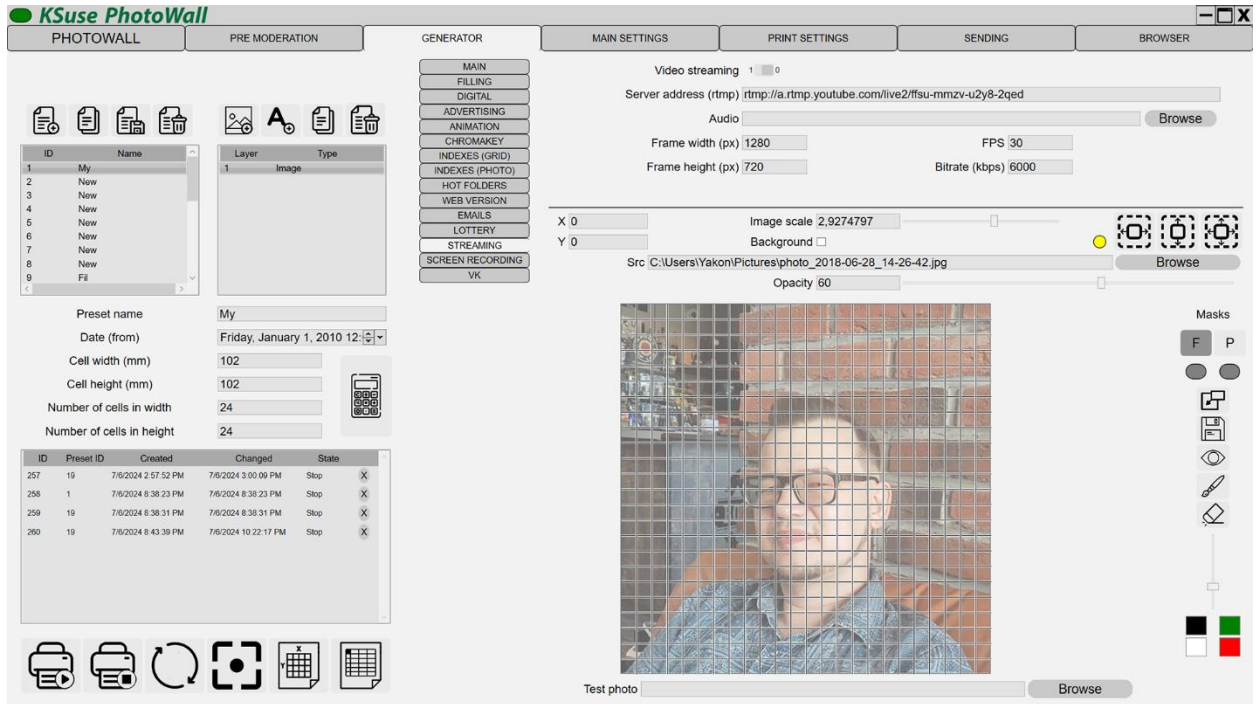
In this window, you can enable the lottery and set the winning cells.

If you do not fill in the column and / or row fields when adding a new position, then they are set randomly.

Winning cells are surrounded by a frame of the specified color on the digital wall, and also blink in the appearance animation.

It is possible to export the list of winning cells with detailed data (email).

Streaming settings

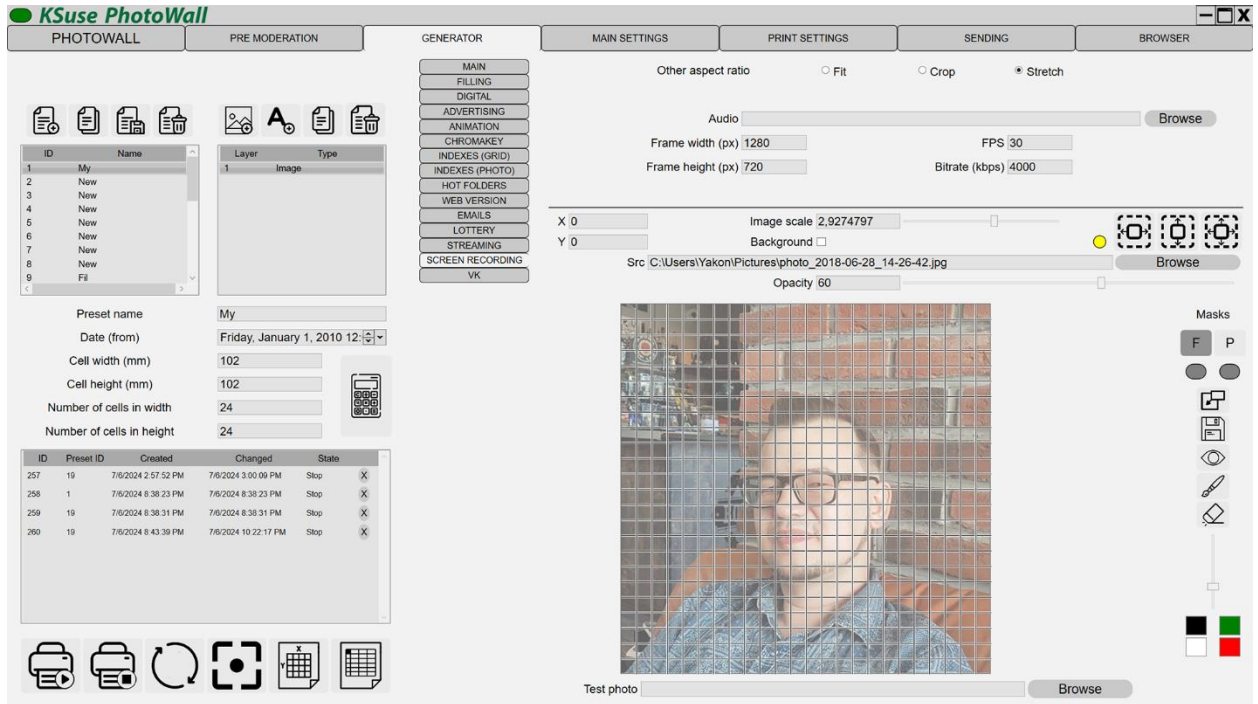


It is possible to broadcast the contents of the second window to the rtmp server and record in mp4. **Available only with Full license.**

The YouTube server address is made up of the stream URL and the stream key.

Attention! Broadcasting and recording are carried out only with the digital wall display turned on and the encoding settings made. The second window may be behind the first. It is important that it is not minimized.

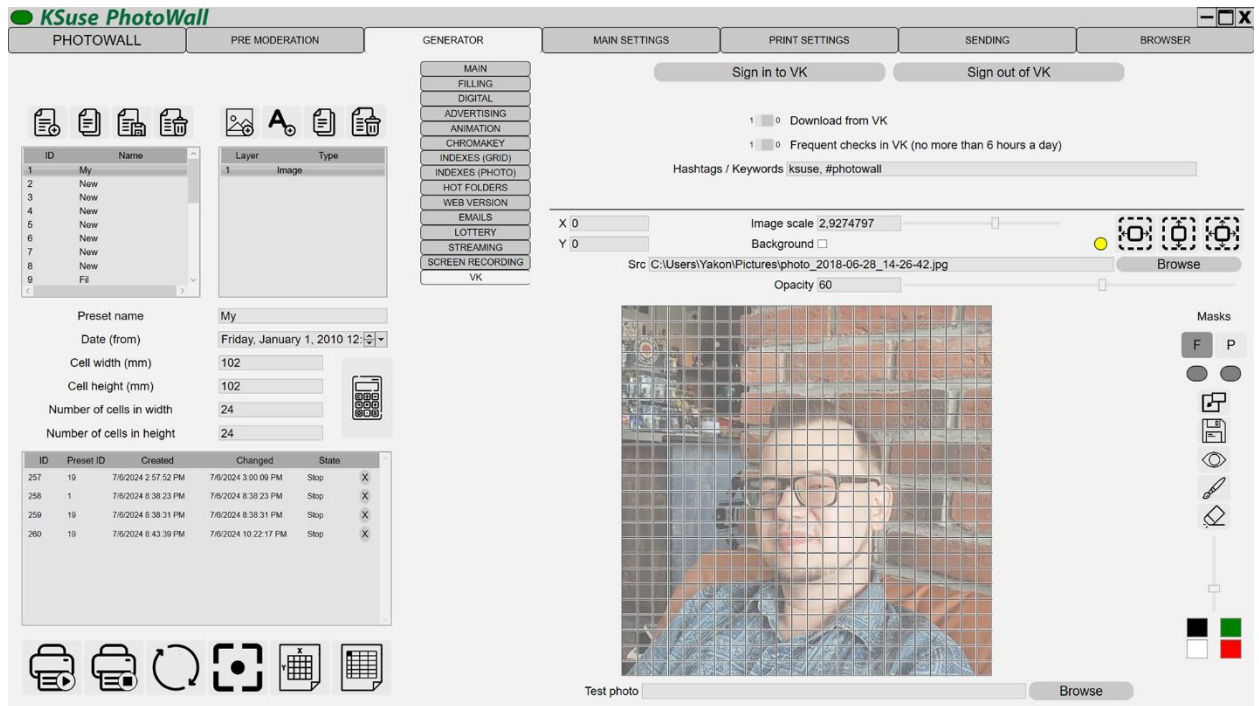
Settings of recording of animation



It is possible to broadcast the contents of the second window to the rtmp server and record in mp4. **Available only with Full license.**

Attention! Broadcasting and recording are carried out only with the digital wall display turned on and the encoding settings made. The second window may be behind the first. It is important that it is not minimized.

VK settings



To work, you need to go through authorization in VK and give permission to the PhotoWall application to access your data.

"Hashtags / Keywords" - Hashtags are entered separated by commas. Photos with these hashtags are also filtered by the above date. All photos attached to posts containing the specified keywords are downloaded.

Operating procedure

1. Work begins with the creation of a new preset.
2. Next, you need to configure the wall settings in the created preset:
 - a. Enter cell dimensions in mm (height and width).
 - b. Enter the number of cells in height and width.
 - c. Check all settings.
3. Add the necessary graphic elements to the wall.
 - a. Add an image layer to the preset.
 - b. Specify the path to the image. The program imports any graphic elements that ImageMagick can work with. To work with some formats, third-party programs are needed. For example, to work with eps you need to install Ghostscript for Windows (64 bit).
 - c. The position of the element is selected by entering the X and Y coordinates, or by dragging by the mouse.
 - d. Set the scale and transparency to the element.
 - e. The image specified as the background will be printed in areas not occupied by the photo (chromakey removal, background removal, the "Crop" option disabled).
4. Select the folders from which photos will be downloaded in the settings.
5. Save the preset.

This is quite a long process. You must wait for the green indicator "Saved".
6. Start printing the photo wall.

If any wall is selected in the list of walls, then the button to start printing starts the continuation of its filling.

If no wall is selected, the button to start printing starts a new photo wall from scratch.

If you need to temporarily interrupt the process, you can turn off the program. At the next launch, it will continue to fill the current photo wall.

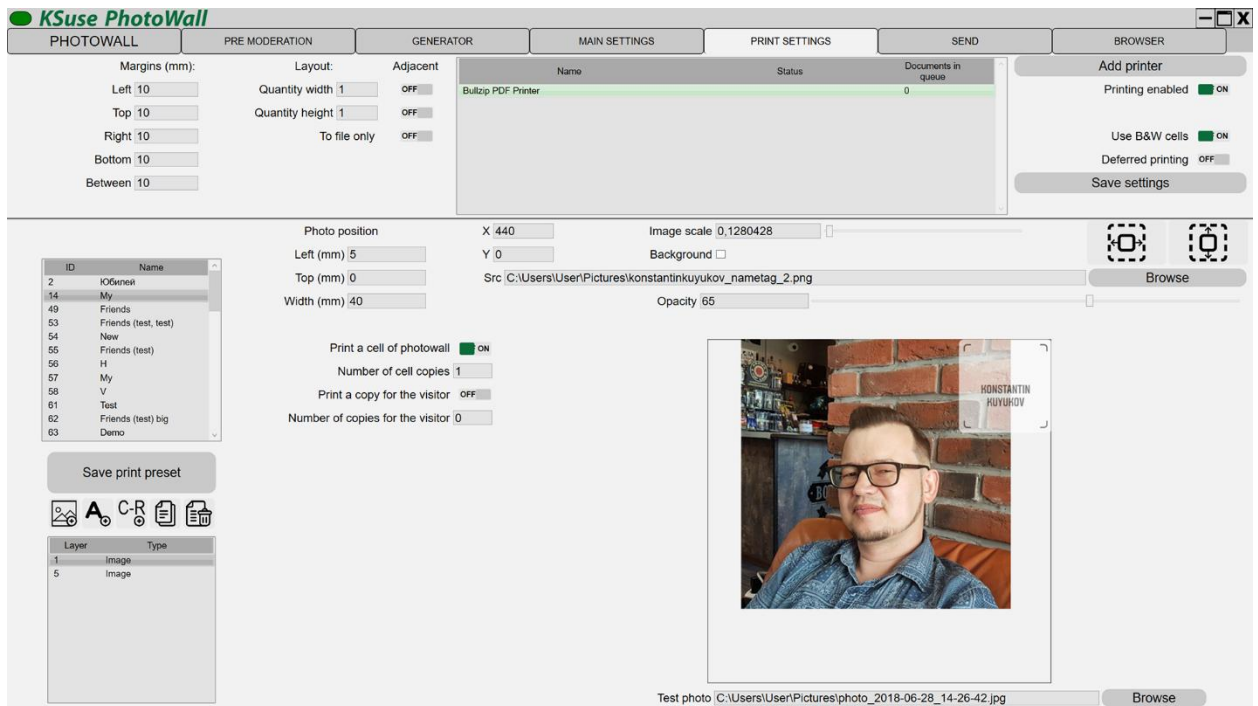
Attention! If you are going to continue to print any wall, then do not change the settings of the preset with which this wall is printed.

Attention! The changes made are not saved if there is a wall in the “Start” status.

To delete a wall and its cache, you must select it in the list and press the Delete key, or click on the X in the corresponding row.

Attention! After removing the wall, you must restart the program!

Print settings window



Attention! Settings cannot be saved if you currently have a wall in the “Start” status!

When printing is on, photos are automatically sent to the printers added to the list. Print jobs are sent to each printer in turn. Printers in offline state are skipped.

Do not enable the “Printing enabled” option if printers are currently unavailable!

Printers that cannot currently print are highlighted in red.

Attention! Paper size and orientation is defined in the printer settings in Windows! These parameters must be the same on every printer added to the list!

Using the "Margins" and "Layout" settings you can place several photos on one printed sheet.

Margins are not related to margins in printer settings! These are additional indents of the photo from the edge of the sheet.

Margins are configured separately for each printer in the list.

Fields are filled with the color selected in the "Background wall color" in the preset settings in the Generator.

By setting the margins in the program, you can eliminate the cropping of the photo by the printer. If the printer cuts the photo, first increase the margins to such a value that they appear on the print, and then reduce them exactly as far as they are visible.

The option "To file only" allows you to create an image intended for printing in the Print folder without sending it to the printer (virtual printing).

With the "Number of cell copies" setting, you can print multiple copies of a cell at once. This option does not work correctly if the layout settings indicate that it is necessary to print adjacent cells.

It is not recommended to print several cells with one photograph, if sequential (not random) filling of the wall is used.

In this window, you can set the branding of printouts for the visitor, by overlaying graphic and text elements.



- add image



- add text



- add index or ordinal number of cell



- duplicate layer



- remove layer

Moving the current layer is done with the left mouse button, or by changing the values of the "X", "Y" fields.

You can scale the current layer using the mouse wheel.

In the cached folder, all prints are saved: photos for the photo wall and copies for the visitor to the cache under the names "wall number _ row _ column .png" and "wall number _ row _ column _c.png", respectively; print tasks (layout with margins) to a file named "wall number _ date _ time .png". With the help of these files you can print any photo and check the correspondence of the aspect ratio and approximate size (it is necessary to cut the transparent fields).

Attention! The cell numbering here always starts at 0 and does not depend on the preset settings.

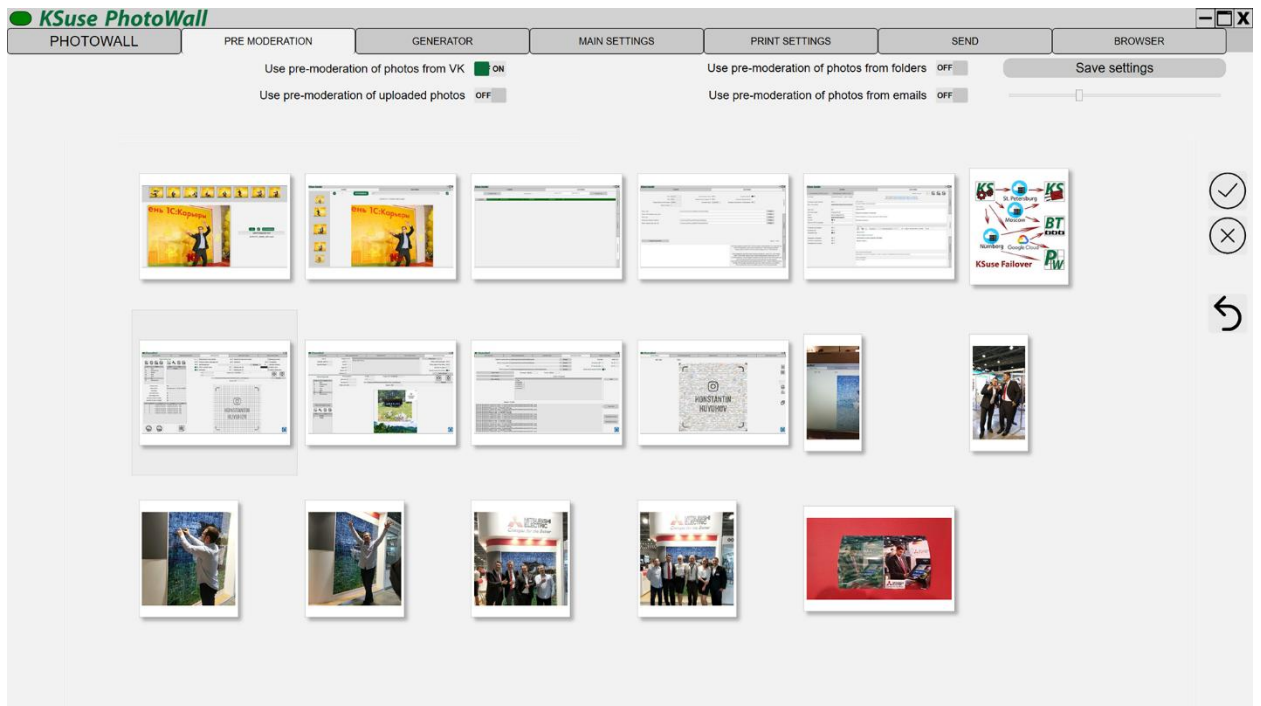
When the option “Use B/W cells” is turned on, photos after processing appear on the wall in black and white without overlay graphic. After being sent to print, they are replaced by color photos with overlay graphic.

When the “Deferred printing” option is enabled, the photos will be fully processed, but they will be sent to the printer only after clicking the “Print all photos” button in the main window.

Disabling the use of black and white cells allows you to see photos with overlay graphics for delayed printing.

It is possible to print adjacent cells on one sheet. This may be necessary, for example, when you print 4 photos on a 4”x6” sheet and want to glue it whole without cutting it. It is possible to make separate settings for columns and rows when your printer can cut along one side.

Pre moderation



In this window, pre-moderation of photos is turned on / off.

Moderation is separately activated for photos uploaded from folders, emails and uploaded via the built-in web server.

It is highly recommended to moderate emails. There you can get more junk files, for example, logos embedded in the caption.

The first number shows how many photos are needed.

The second number indicates how many photos are in the print queue.

Using the slider, you can resize preview of photos.

To accept or reject photos, select the photos you need and then use the right-click menu or the buttons on the right side of the screen.



- approve photo



- reject photo

In this window, the first photo is automatically selected when there is no selection.

Hotkeys:

A – accept

R – reject

Remember to reject photos that you don't need. Only the number of photos necessary to complete the wall is loaded into pre-moderation.



- return previously rejected photos for pre-moderation.



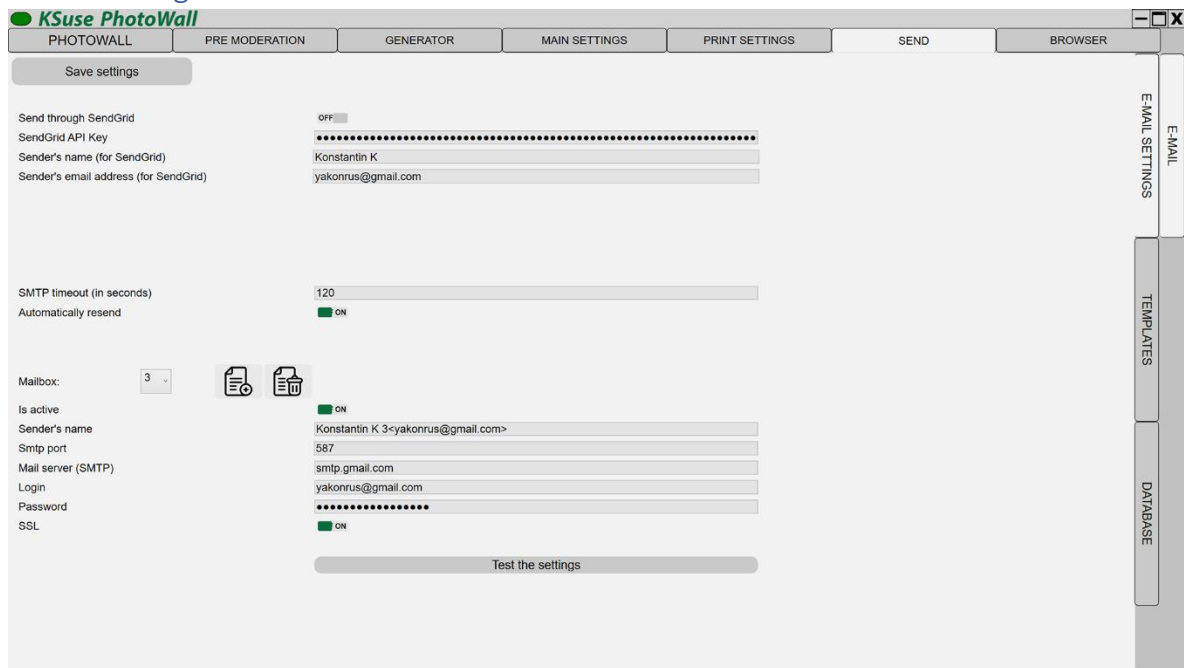
,



- allows you to temporarily pause and then continue printing

Window "SEND"

Email Settings Window



To send via SendGrid, you need to create an API key in your account and copy it to the program settings.

When entering the data of several mailboxes, the program will send letters in turn from each. In the absence of a license, sending is done from only one mailbox.

In the "Senders's name" field, it is possible to specify a display name and in square quotation type an email. The specified email must match the account on the mail server.

Windows "Templates"

The screenshot shows the 'Templates' window in the PhotoWall application. The window has a menu bar with 'PHOTOWALL', 'PRE MODERATION', 'GENERATOR', 'MAIN SETTINGS', 'PRINT SETTINGS', 'SEND', and 'BROWSER'. Below the menu bar are buttons for 'Export letter template', 'Import letter template', 'Save letter template', and 'Additional settings'. A 'Template:' dropdown is set to '11'. On the right side, there are vertical tabs for 'EMAIL SETTINGS', 'EMAIL', 'TEMPLATES', and 'DATABASE'.

The main content area is divided into two columns. The left column contains settings for the email template, including a dropdown for 'The template is used to send thanks', a dropdown for 'Send after posting on the wall', a checked checkbox for 'Show agreement', and several unchecked checkboxes for 'Give consent by default', 'Send without consent', 'Show consent to use', and 'Give consent to use by default'. Below these are fields for 'Mail text' containing 'Hello!', 'Thank you!', 'Your cell index is {Index}', 'Subscribe to our Instagram page!', and 'Our link: https://www.instagram.com/konstantinkuyukov/'.

The right column contains text input fields for 'Text of link to agreement' (with a default value), 'Text of agreement', 'Text of consent to use' (with a default value), and 'Mail subject' (with a default value 'Thank you!').

At the bottom, there is an 'Editor' window showing a preview of the email content with a rich text editor toolbar. The preview text is: 'Hello!', 'Thank you!', 'Your cell index is {Index}', 'Subscribe to our Instagram page!', 'Click to subscribe', and 'Have a good evening! :)'. The toolbar includes options for Paragraph, Times New Roman, font size 3, and various text formatting tools.

It is necessary to fill in both text and html version of the email!

It is possible to obtain two consents from the user on the animation ordering web page. The first of these can be made mandatory.

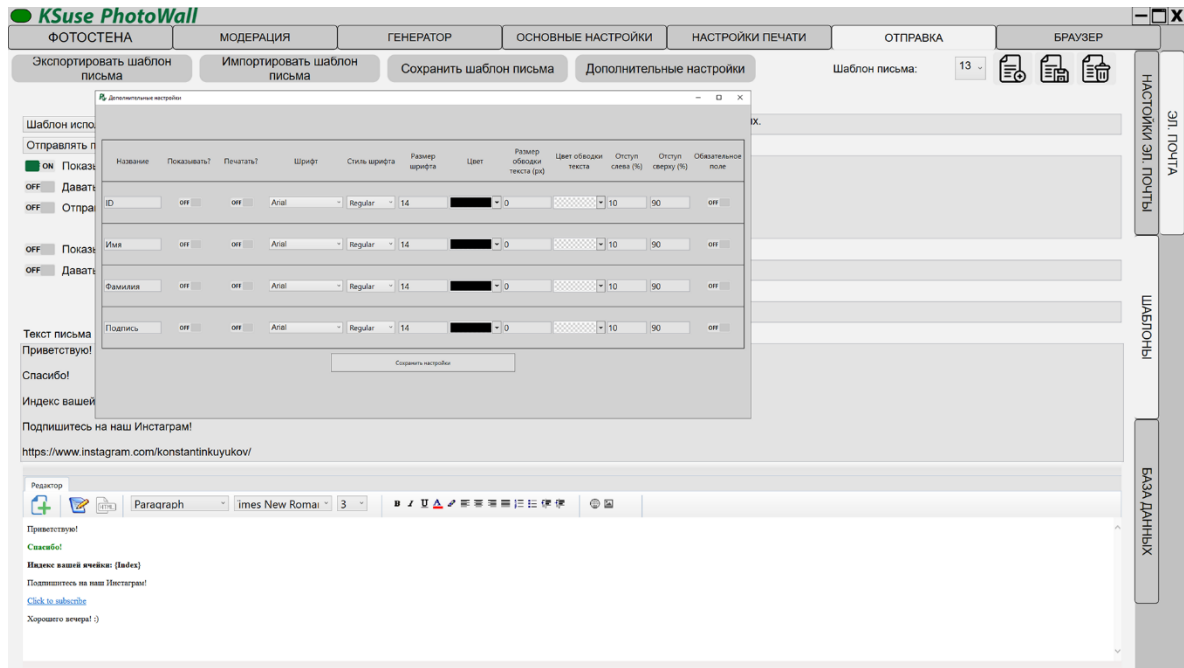
There are 4 types of email templates: Template is not used, Template is used to send animation, Template is used to send thanks, Template is used to notify about a win. The last two are used to send notifications if photos are received via email or from the online version (website) of the photo wall.

Saving a template with one of the last 3 types, automatically sets the "Template not used" type for the previously selected one with the same type.

If a template for sending animation is not selected, then letters will not be placed in the sending queue. Likewise, with the last two templates.

An email with thanks can be sent either when you receive a photo or when posted on the wall. In the second variant, the text {Index} in the email template is replaced with the cell index.

Window "Additional Settings"



In this window, you can choose which additional data entry fields to display in the web gallery.

The collected data is contained in the exported xls file.

It is also possible to turn on printing of the entered data on photos choosing the position, font, and color of labels.

Additional fields can be renamed and made mandatory.

Database window

	Date, time	Type	S	C	R	Email	A	U	T	M	Name	Status	Description
Send	2021-01-18 23:36:15	1				yakon@inbox.ru	0	0	12	2	photowalltestimap@gmail.com_5351154_IM	Sended	OK
Send	2021-01-18 23:09:29	1				yakon@inbox.ru	0	0	4	2	yakon@inbox.ru_5294016_IMG_4273.jpg	Sended	OK
Send	2021-01-18 23:08:43	1				yakon@inbox.ru	0	0	4	2	yakon@inbox.ru_5134844_IMG_4330.jpg	Sended	OK
Send	2021-01-18 23:07:06	1				yakon@inbox.ru	0	0	4	2	photowalltestimap@gmail.com_3436144_IM	Sended	OK
Send	2021-01-18 23:01:17	1				yakon@inbox.ru	0	0	4	2	photowalltestimap@gmail.com_5337496_IM	Sended	OK
Send	2021-01-18 22:59:50	1				yakon@inbox.ru	0	0	4	2	yakon@inbox.ru_5134844_IMG_4330.jpg	Sended	OK
Send	2021-01-18 22:56:38	1				yakon@inbox.ru	0	0	4	2	yakon@inbox.ru_6149176_IMG_4066.jpg	Sended	OK
Send	2021-01-18 22:44:41	1				yakon@inbox.ru	0	0	4	2	photowalltestimap@gmail.com_5337496_IM	Sended	OK
Send	2021-01-18 22:37:35	1				yakon@inbox.ru	0	0	4	2	photowalltestimap@gmail.com_5351154_IM	Sended	OK
Send	2021-01-18 22:36:03	1				yakon@inbox.ru	0	0	4	2	photowalltestimap@gmail.com_3436144_IM	Sended	OK
Send	2021-01-18 22:33:49	1				yakon@inbox.ru	0	0	4	2	yakon@inbox.ru_5294016_IMG_4273.jpg	Sended	OK
Send	2021-01-18 22:31:07	1				yakon@inbox.ru	0	0	4	2	yakon@inbox.ru_5134844_IMG_4330.jpg	Sended	OK
Send	2021-01-18 22:27:44	1				yakon@inbox.ru	0	0	4	2	photowalltestimap@gmail.com_5351154_IM	Sended	OK
Send	2021-01-18 22:27:44	1				yakon@inbox.ru	0	0	4	2	photowalltestimap@gmail.com_3436144_IM	Sended	OK
Send	2021-01-18 22:27:44	1				yakon@inbox.ru	0	0	4	2	photowalltestimap@gmail.com_5337496_IM	Sended	OK
Send	2021-01-18 22:27:43	1				yakon@inbox.ru	0	0	4	2	yakon@inbox.ru_5134844_IMG_4330.jpg	Sended	OK
Send	2021-01-18 22:27:43	1				yakon@inbox.ru	0	0	4	2	yakon@inbox.ru_6149176_IMG_4066.jpg	Sended	OK
Send	2021-01-18 22:27:43	1				yakon@inbox.ru	0	0	4	2	yakon@inbox.ru_5294016_IMG_4273.jpg	Sended	OK
Send	2021-01-18 22:22:19	1				yakon@inbox.ru	0	0	4	2	yakon@inbox.ru_5294016_IMG_4273.jpg	Sended	OK
Send	2021-01-18 21:52:58	1				yakon@inbox.ru	0	0	4	2	yakon@inbox.ru_5134844_IMG_4330.jpg	Sended	OK
Send	2021-01-14 15:16:36	2				yakon@inbox.ru	0	0	8	2	photowalltestimap@gmail.com_5351154_IM	Sended	OK

In this window, you can see the status of all sent letters in the selected date range and resend if necessary.

You can delete an error line by selecting and pressing the Delete key.

The width of the columns can be changed by moving the separators in the table header.

The "Send All" button starts the creation of the video and re-sends all emails for the specified date interval except those already sent.

In the table you can change the email address of the recipient and the number of the template.

"S" - wall ID

"C" - column number

"R" - row number

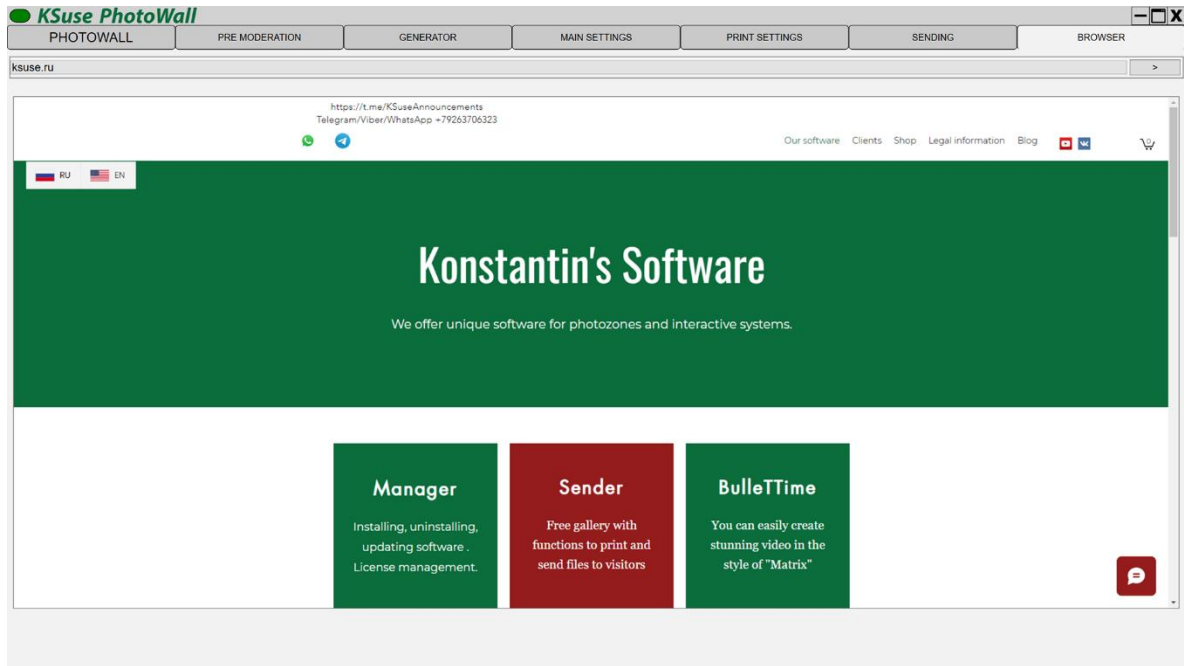
"A" - whether consent was given to the processing of personal data

"U" - was consent to the use of the video given

"T" - letter template number

"M" - mailbox number

Window "Browser "



This tab contains a built-in Chromium-based browser.

Program activation

Attention! The program is tied to the computer. One license is valid for one computer.

License management is carried out through KSuse Manager.

Used libraries

Icons made by Freepik from www.flaticon.com is licensed by CC 3.0 BY

<https://www.flaticon.com/authors/freepik>

Icons made by Smashicons from www.flaticon.com is licensed by CC 3.0 BY

<https://www.flaticon.com/authors/smashicons>

Icons made by Vitaly Gorbachev from www.flaticon.com is licensed by CC 3.0 BY

<https://www.flaticon.com/authors/vitaly-gorbachev>

Photo icons created by Pixel perfect – Flaticon

<https://www.flaticon.com/free-icons/photo>

<http://creativecommons.org/licenses/by/3.0/>

System.Data.SQLite - <https://system.data.sqlite.org>

Microsoft - <https://dotnet.microsoft.com/>

The MIT License:

Newtonsoft.Json - <https://www.newtonsoft.com/json>

FluentFTP - <https://github.com/robinrodricks/FluentFTP>

HelixToolkit - <https://github.com/helix-toolkit/helix-toolkit>

HttpMultipartParser - <https://github.com/Http-Multipart-Data-Parser/Http-Multipart-Data-Parser>

MailKit - <http://www.mimekit.net/>

MimeKit - <http://www.mimekit.net/>

Portable.BouncyCastle - <https://www.bouncycastle.org/csharp/>

SendGrid - <https://sendgrid.com/>

SharpZipLib - <https://github.com/icsharpcode/SharpZipLib>

starkbank-ecdsa - <https://github.com/starkbank/ecdsa-dotnet>

SkiaSharp - <https://github.com/mono/SkiaSharp/>

VkNet - <https://vknet.github.io/vk/>

Flurl - <https://flurl.dev/>

MimeMapping - <https://github.com/zone117x/MimeMapping>

OpenTK - <https://github.com/opentk/opentk>

QRCode - <https://github.com/codebude/QRCode/>

QRCode.js - <https://github.com/davidshimjs/qrcodejs>

Apache License:

Magick.NET - <https://github.com/dlemstra/Magick.NET>

NPOI - <https://github.com/tonyqus/npoi>

MimeTypesMap - <https://github.com/hey-red/MimeTypesMap>

SixLabors.ImageSharp - <https://github.com/SixLabors/ImageSharp>

Microsoft Public License (Ms-PL):

Extended.Wpf.Toolkit - <https://github.com/xceedsoftware/wpftoolkit>

BSD 3-Clause License:

NLog - <https://nlog-project.org/>

OpenCvSharp4 - <https://github.com/shimat/opencvsharp>

LGPL v3:

FFMPEG - <https://www.ffmpeg.org/>

Licensed x264 Software